

STARS OF MONTANA FEMALE SALE

SATURDAY,

OCTOBER 21, 2017

Billings Livestock, Billings, MT • 5:00 PM

Offering:

- ★ Donors ★ Heifer Calves ★ Proven Cows
- ★ Flush Opportunities ★ Bred Heifers



7th Annual

ICC PAY RAISE 4886



Daughters & Service Sells!

BASIN LUCY 4240



SD LADY 6217 W



SITZ ADVANTAGE 869



Daughters & Service Sells!

GMAR SUPER DUTY E024



Ultimate Real World Performance Genetics Presented By:

BASIN
ANGUS • RANCH

GREEN MOUNTAIN
ANGUS RANCH RYEGATE, MT
(406) 568-2768

IDLAND
CATTLE COMPANY INC

Sioux Pass
Livestock & Grain
Carter Miklovich
Lodge Grass, Montana



Guest Consignors:

Circle L Angus • Malek Angus • Olson Cattle Co • Rich Angus



Ultimate Real World Performance Genetics

NEW DATE!
NEW LOCATION!

Saturday
October 21, 2017 • 5:00 PM (MDT)
Billings Livestock • Billings, Montana

7th Annual

SELLING:

Donors - Proven Cows - Bred Heifers - Heifer Calves - Embryos - Pregnancy

DIRECTIONS TO SALE:

Exit 455 off Interstate 90

SALE DAY PHONE:
406-245-4151

AUCTIONEER:

Joe Goggins
406-861-5664 (cell)

LIVESTOCK PRESS REPRESENTATIVES:

Kurt Kangas, Angus Journal.....406-366-4190
John Goggins, Western Ag Reporter.....406-698-4159
Devin Murnin, Western Livestock Journal.....406-860-3181
Dave Hinman, Director American Angus Association

SALE COORDINATORS:

Gary Wall: 406-208-8536 and
Hans Buckner: 406-581-0612

ANNOUNCEMENTS:

Announcements made sale day from the block take precedence over printed material.

TERMS & CONDITIONS:

Cattle sell under the standard terms and conditions recommended by the American Angus Association.

TERMS: Cash on sale day. Settlement for all phone bids must be made no later than November 15, 2017.

NILE WEEK SALE SCHEDULE:

LADY'S OF THE BEARTOOTH -
Thursday, October 19, 7:30 PM
Big Horn Resort

NILE ANGUS FEMALE SALE -
Saturday, October 21 - 12 Noon
Metra Park

STARS OF MONTANA SALE -
Saturday, October 21, - 5:00 PM
Billings Livestock

PRESENTED BY:

Basin Angus.....	406-350-0350	Doug (cell)
Green Mountain Angus.....	406-220-1975	Tim Todd (cell)
Idland Cattle Company.....	406-485-2292	Glen (cell).....406-974-2293
Sioux Pass Angus.....	406-639-2524	Carter (cell).....406-679-2179
Split Diamond Ranch.....	406-581-0612	Hans

Guest Consignors:

Circle L Angus.....	Cory Lamey cell 406-491-7363
Malek Angus.....	Ty Malek (cell) 406-899-4360
Olson Cattle Co.....	Wendy & Kane Olson (Home) 406-745-2782
	(Cell) 406-261-3782
Rich Angus.....	Jed Stevenson (Home) 406-350-5500

TRUCKING:

Buyer assumes all trucking responsibility. However, we will be glad to assist in making the best possible trucking arrangements possible.

HEALTH:

All cattle will have interstate health papers and females have been pregnancy examined safe in calf. Some states require additional testing. We will be happy to assist you in determining the requirements for your state.

Cattle available for viewing at Billings Livestock, Billings, MT October 19, 2017. Complimentary Lunch will be served prior to the sale.

EPDs:

Current on September 8, 2017.



SALE BROADCAST LIVE

Bid online @ www.frontierlivesale.com

For information: Contact
Scott Fraser: 406-860-6548
Sam Fraser: 406-860-0590 or 406-853-6937

Bidding on www.frontierlivesale.com
is as easy as 1,2,3!

1. Register as a buyer before the sale at www.frontierlivesale.com !
2. Login on sale day with the credentials provided at registration!
3. Watch the sale and BID LIVE from the comfort of your own home!

Call 866-621-5546 for tech help.

Dear Angus Friends,

Cattle that work in the real world have never been the result of expensive advertising campaigns, breed hype or matching the current industry fad. Cattle that work are the result of dedicated people who breed cattle with a long term focus. The Stars of Montana breeder group welcomes you to the 7th annual sale this year with a new date and location showcasing their best donors, bred cows, flushes, bred heifers and 2017 heifer calves from some of the elite performance programs in all Montana and beyond. The best Angus genetics in the world don't become legends by accident. They are intentionally designed by progressive breeders to satisfy demand for quality and meet the high standards to become some of the finest in the breed.

Our commitment to performance Angus genetics and breed leadership goes back a long way and ahead even further. The Basin Angus lots include fabulous donors and elite females that are destined to make breed history. The Green Mountain Angus Bull Sale last fall was off the charts and Tim Todd has served the state the last year as President of the Montana Angus Association with tremendous leadership and vision. Their bred heifers and fabulous heifer calf selling as Lot 14 is spectacular. The Idland foundation females and flush lots represent the best in real world performance genetics. This program produced the two high selling bulls at the Midland Bull Test Station in 2017 along with off the charts elite females that got the entire nation's attention. Don't overlook the dam of Basin Excitement selling as Lot 19...she's a real cash cow! Split Diamond Ranch has a great set of bred heifers headlined by the Lot 34 Ten Speed daughter from the powerful Lady cow family along with high growth Border Patrol daughters that are capable of producing test station winners. The Tour of Duty bred heifer from Sioux Pass Angus selling as Lot 46 puts it all together and sells bred to Trump, a tremendous curvebender featured at ORigen. The heifer calves from Circle L Angus and the bred heifers from Olson Cattle Co. are the top from these progressive programs. You can always count on real production from Jed Stevenson's Rich Angus herd and Malek Angus have a cutting edge flush opportunity that can move the needle forward for breed progress and earning power.

The Stars of Montana breeders have the leadership characteristics that make it a pleasure to work with. They are stubborn, humble, one of a kind, resilient and trustworthy. Being a leader isn't easy...it's hard. It takes a broad range of talents to excel in this group effort. Buy with confidence knowing that these are true foundation genetics that will be profitable investments for your herd.

Sincerely,
Gary Wall and Hans Buckner
Sale Coordinators



Ultimate Real World Performance Genetics



Stars Of Montana Network of Sales Contributors

Index Of Sale Lots

Basin Angus Lots 1-8
Green Mountain Angus Lots 9-14
Idland Cattle Co. Lots 15-33
Split Diamond Ranch Lots 34-45
Sioux Pass Angus Lot 46

Circle L Angus Lots 47-48
Olson Cattle Co..... Lots 49-54
Malek Angus Lot 55
Rich Angus..... Lots 56-57



Lot 1 - Basin Lucy 4240



Basin Lucy 4240

Birth Date: 01/18/14 Cow #17926842 Tattoo: 4240

EXAR Denver 2002B
17160560

EXAR Upshot 0562B

Exar Royal Lass 1067

Sitz Upward 307R #
EXAR Barbara T020 #
EXAR 263C #
BR Royal Lass 19-132

Basin Lucy 1037
16938584

Gardens Wave #

Basin Lucy 262S

Gardens Highmark #
Green Garden Lady 6255 S2
Vermilion Payweight J847 #
Basin Lucy 3829

CED	BW	WW	YW	CEM	MILK
+9	.34	+1.9	.48	+56	.43
+48	.39	+1.13	.36	+85	.37

zoetis Percent Rank



CED	BW	WW	YW	DMI	YH	SC	DOC	HP	CEM	MK	MW	MH	CW	MARB	RE	FAT	TEND
32	55	33	27	47	51	54	56	9	20	51	77	68	23	3	13	20	54

- BASIN LUCY 4240 is the first daughter in production out of BASIN LUCY 1037. Selected to enter the Basin ET program while raising her first natural calf, she was flushed 6 times for a total of 33 embryos.
- The Dam of BASIN LUCY 4240 was the top selling female in the 2016 Stars of Texas sale, where one-half interest sold for \$47,000 to Montana Ranch. Other full sisters to the Dam include BASIN LUCY 1022, our \$200,000 valued donor owned in partnership with Tailor Made Genetics, and BASIN LUCY 1018, the top selling female of the 2016 Stars of Montana sale, where she sold for \$34,000 to Friendship Farms.
- BASIN LUCY 4240 is a full sister in blood to BASIN YUMA 4286, our top selling bull in 2015, and now a featured sire in the ORigen system. She is also a full sister in blood to BASIN LUCY 4261, the top selling female in the 2017 Stars of Texas sale, where she sold for \$43,000 to EZ Angus.
- There are six maternal brothers to BASIN LUCY 4240 that are being used in purebred herds, including: BASIN ADVENTURE 6275, marketed thought ABS, BASIN DISCOVERY 6287, sold to Quaker Hill Angus in our 2017 sale, BASIN GENERATION 5310, top selling bull to EZ Angus in our 2016 sale, and BASIN PROPHET 5395, retained by Basin Angus.
- With the number of embryos from BASIN LUCY 4240 put in during the 2017 breeding season, and the continued influence of her dam, we are able to offer this proven donor for sale while she still has a lifetime of production ahead of her.
- AI bred on 4-20-17 to BASIN ADVANCE 3134. Ultrasound examined safe to BASIN ADVANCE 3134, and estimated due 1-27-18.

Basin Yuma 4286



Full brother in blood to Lot 1

Basin Angus Lucy Cow Family



Lot 2 - Basin Lucy 7146



Basin Lucy 7146

Birth Date: 03/15/17 Cow +18802948 Tattoo: 7146

EXAR Rapture 5844B
18116133

Quaker Hill Rampage 0A36
BoBo Rita 1559

MCC Daybreak #
QHF Blackcap 6E2 of4V16 4355
Summitcrest Complete 1P55 #
DRMCTR 111 Rita 6108

Basin Lucy 1037
16938584

Gardens Wave #
Basin Lucy 262S

Gardens Highmark #
Green Garden Lady 6255 S2
Vermilion Payweight J847 #
Basin Lucy 3829

CED	BW		WW		YW		CEM		MILK		
+5	.32	+2.2	.49	+52	.42	+99	.37	+13	.27	+36	.28
CW	MARB		RE		FAT		\$W	\$F	\$G		\$B
+54	.39	+1.13	.36	+.89	.35	-.011	.32	+62.23	+71.04	+55.12	+183.76

zoetis Percent Rank

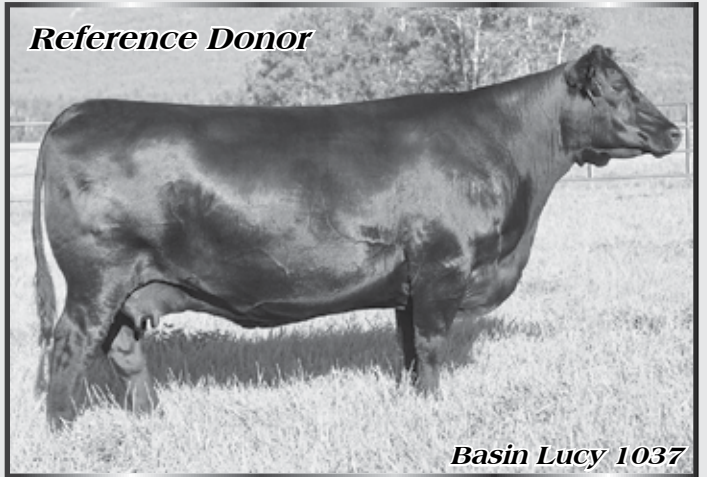
CED	BW	WW	YW	DMI	YH	SC	DOC	HP	CEM	MK	MW	MH	CW	MARB	RE	FAT	TEND
29	27	40	25	4	82	33	50	44	37	10	44	24	9	6	11	41	7

- BASIN LUCY 7146 is a moderate framed, deep bodied, powerfully constructed daughter of BASIN LUCY 1037. She recorded a 205 day weight of 791 pounds. Her EPDs rank in the top 10% of the breed for CW, top 5% for MARB, and top 4% for RE. She records a \$W Index in the top 10% and a \$B Index in the top 1% of the breed.
- The sire of BASIN LUCY 7146 is one of the most complete and balanced sons of QUAKER HILL RAMPAGE. The dam of EXAR RAPTURE 5844B is making her mark as one of the dominant herd sire producers within the Angus breed, and is also the dam of EXAR STUD 4658B, EXAR SPREAD 5767B, and EXAR PROPHETIC 5732B, and EXAR PROFITEER 5730B.
- The dam of BASIN LUCY 7146 is one of the most balanced carcass trait cows in the breed. She has an exceptional progeny ultrasound record of 16 IMF 112 and 16 RE 106. She has EPDs that rank in the top 1% for MARB and RE, along with a \$B Index in the top 1% of the breed.

Basin Lucy 6265 -
the \$170,000
Angus Foundation
Donation heifer,
and a maternal
sister to Lot 2



Reference Donor



Basin Lucy 1037



Basin Lucy 1037

Birth Date: 02/18/11 Cow +16938584 Tattoo: 1037

Gardens Wave #
13818764

Gardens Highmark #
Green Garden Lady 6255 S2

Basin Lucy 262S
15332438

Vermilion Payweight J847 #
Basin Lucy 3829

Ref
Donor

Summitcrest Scotch Cap 0B45 #
Green Garden Pride 6128 S1
N Bar Emulation EXT #
Green Garden Lady 4256 S2
Vermilion Dateline 7078 #
Vermilion Lass 7969
C A Future Direction 5321 #
Basin Lucy 178E

CED	BW	WW	YW	CEM	MILK						
+6	.38	+2.1	.59	+47	.54	+92	.49	+15	.36	+28	.38
CW	MARB	RE	FAT	\$W	\$F	\$G	\$B				
+48	.45	+1.26	.41	+1.09	.41	+.008	.39	+47.64	+65.03	+59.09	+179.71

zoetis Percent Rank

CED	BW	WW	YW	DMI	YH	SC	DOC	HP	CEM	MK	MW	MH	CW	MARB	RE	FAT	TEND
46	37	66	46	3	66	18	77	39	1	40	86	69	18	2	3	59	11

- BASIN LUCY 1037 is a key building block in the current Basin Angus Ranch breeding program. She is a cow that combines phenotype and maternal efficiency, with growth and exceptional carcass merit.
- BASIN LUCY 1037 has an exceptional progeny ultrasound record of 16 IMF 112 and 16 RE 106. She has EPDs that rank in the top 1% for MARB and RE, along with a \$B Index in the top 1% of the breed.
- BASIN LUCY 1037 was the top selling female of the 2016 Stars of Texas sale, where one-half interest sold for \$47,000 to Montana Ranch.
- Heifer calf pregnancies from BASIN LUCY 1037 have sold as the \$34,000 top selling pregnancy in the 2017 Stars of Texas sale, and as the \$22,000 second high selling pregnancy is the 2016 Quaker Hill Rampage sale.
- BASIN LUCY 1037 has already produced six sons that are being used in purebred herds, including: BASIN ADVENTURE 6275, marketed though ABS, BASIN DISCOVERY 6287, sold to Quaker Hill Angus in our 2017 sale, BASIN GENERATION 5310, top selling bull to EZ Angus in our 2016 sale, and BASIN PROPHET 5395, retained by Basin Angus.



Basin Lucy 1018 -
Flush sister to Basin Lucy
1037 & \$34,000 top selling
cow in 2016 Stars Sale to
Friendship Farms, GA



Basin Lucy 1022 -
Flush sister to Basin Lucy
1037 & \$200,000 dam of
Basin Yuma featured at
Tailer Made Genetics, KS

Basin Angus Joy Cow Family



Lot 6 - Basin Joy 2015



Basin Joy 2015

Birth Date: 02/08/12 Cow #17332423 Tattoo: 2015

Summitcrest Complete 1P55 #
14850409

C F Right Design 1802 #
Summitcrest Elba 1M17

Bon View New Design 1407 #
Vision HF Blackcap 0015 #
Vermilion Dateline 7078 #
Summitcrest Elba 1F43

Basin Joy 566T
15690925

B P F Special Focus 504 #
Basin Joy 204R

Mytty In Focus #
B P F Black Cash 341
Basin Future Direction N905
Basin Joy 2867

CED	BW	WW	YW	CEM	MILK
+15	.37	-2.4	.57	+45	.51
+81	.47	+15	.36	+32	.40
CW	MARB	RE	FAT	\$W	\$F
+37	.45	+81	.41	+57	.41
+071	.38	+60.47	+44.32	+36.82	+131.74

zoetis Percent Rank

CED	BW	WW	YW	DMI	YH	SC	DOC	HP	CEM	MK	MW	MH	CW	MARB	RE	FAT	TEND
12	7	46	44	5	65	72	48	13	24	17	89	94	39	30	33	93	85

- BASIN JOY 2015 is a top producing young donor cow. While she is an extreme calving ease female, she is also exceptionally powerful in her phenotype. She is tremendously deep bodied, easy fleshing, and productive, with a progeny record of 2 NR 111, 2 YR 108, 4 IMF 100 and 4 RE 107.
- BASIN JOY 2015 has been a very consistent embryo producer, having been flushed 8 times and making a total of 66 good quality embryos. With most all of those embryos transferred for calves in the spring of 2018, she is going to have a significant and long term impact in the Basin Angus herd.
- The Dam of BASIN JOY 2015 has produced daughters that are working as donors in numerous herds around the country. Daughters of BASIN JOY 566T include BASIN JOY 1036, second high selling cow in the 2016 Stars of Montana sale to Montana Ranch (She is the Dam of BASIN RAINMAKER 4404, herd sire at EZ Angus and a new addition to the GENEX lineup) and BASIN JOY 2006 that still resides in the Basin Angus herd (She is the Dam of BASIN ADVANCE 5016, herd sire at Express Ranches) and numerous feature females sold by Express Ranches and Teixeira Cattle Company.
- AI bred on 5-10-17 to EXAR POWERSOURCE 4723B. Ultrasound examined safe to EXAR POWERSOURCE 4723B, and estimated due 2-16-18.

Basin Joy 566T



Dam of Lot 6

Basin Joy 1036



**2nd high selling cow in the 2016 Stars Sale
and maternal sister to Lot 6**

Basin Angus Joy Cow Family



Lot 7 - Basin Joy 2019



Lot 8 - Basin Joy 6041



Basin Joy 2019

Birth Date: 02/10/12 Cow 17326674 Tattoo: 2019

B P F Special Focus 504 #
15140670

Mytty In Focus #

B P F Black Cash 341

SA F Focus of E R #
Mytty Countess 906
J R Something Special #
B P F Black Cash 944

Basin Joy 4686
15338197

Riverbend Mile High 3718 #

Basin Joy 123P

Bon View New Design 1407 #
GAR Precision 1919 #
Basin Max 853M
Basin Joy 654L

CED	BW	WW	YW	CEM	MILK
+9	.39	-.9	.57	+49	.51
+83	.47	+5	.37	+28	.41
CW	MARB	RE	FAT	\$W	\$F
+38	.44	+.74	.40	+.43	.40
+.028	.37	+55.39	+42.77	+38.61	+133.25

zoetis Percent Rank

CED	BW	WW	YW	DMI	YH	SC	DOC	HP	CEM	MK	MW	MH	CW	MARB	RE	FAT	TEND
20	10	92	64	17	96	56	67	9	63	38	72	89	52	42	49	75	16

- BASIN JOY 2019 is a productive young cow with a brood cow look and balanced data. She has a progeny record of 3 NR 107, 3 YR 104, 3 IMF 110 and 3 RE 113.
- The first calf produced by BASIN JOY 2019 is serving as a herd sire in the Clint & Valerie Carr herd at Hobson. BASIN PAYWEIGHT 4249 is a moderate framed, big ribeye, heavy muscled son of BASIN PAYWEIGHT 107S, with data that ranks him is the top 3% of the breed for \$W Index and top 2% for \$B Index.
- The third calf produced by BASIN JOY 2019 is the powerful bred heifer that sells as Lot 8 in this offering.
- AI bred on 5-29-17 to BASIN PAYWEIGHT 1682, and then exposed to BASIN PAYCHECK 5249. Ultrasound examined safe to BASIN PAYWEIGHT 1682, and estimated due 3-7-18.



Basin Joy 6041

Birth Date: 02/20/16 Cow 18511904 Tattoo: 6041

EXAR PowerSource 4723B
17740199

EXAR Denver 2002B

EXAR Lucy 2944

EXAR Upshot 0562B
Exar Royal Lass 1067
Connealy Consensus 7229 #
EXAR Lucy 9703

Basin Joy 2019
17326674

B P F Special Focus 504 #

Basin Joy 4686

Mytty In Focus #
B P F Black Cash 341
Riverbend Mile High 3718 #
Basin Joy 123P

CED	BW	WW	YW	CEM	MILK
+7	.35	+1.6	.55	+68	.49
+114	.44	+9	.29	+26	.30
CW	MARB	RE	FAT	\$W	\$F
+48	.42	+1.25	.38	+.63	.38
+.012	.35	+68.93	+80.75	+52.87	+168.37

zoetis Percent Rank

CED	BW	WW	YW	DMI	YH	SC	DOC	HP	CEM	MK	MW	MH	CW	MARB	RE	FAT	TEND
44	54	24	14	45	38	50	53	5	55	20	41	63	9	5	13	50	47

- BASIN JOY 6041 is deep bodied, big capacity, powerhouse of a bred heifer, with tremendous individual performance data: Weaning ratio of 110, Yearling ratio of 109, IMF ratio of 125, and RE ratio of 111.
- The Sire of BASIN JOY 6041 is an aptly named bull. EXAR POWERSOURCE 4723B is consistently producing progeny with exceptional capacity, muscle mass, and overall powerful phenotype.
- The Dam of BASIN JOY 6041 sells at Lot 7 in this offering. She is a top producing young cow with a progeny record of 3 NR 107, 3 YR 104, 3 IMF 110 and 3 RE 113.
- AI bred on 4-25-17 to BASIN PAYCHECK 5249. Ultrasound examined safe to BASIN PAYCHECK 5249, and estimated due 2-1-18.



Trevor & Brittany Berg, Nicole,
Leisa, Sharon & Doug Stevenson

Doug Stevenson:
406-350-0350



Welcome to the 2017 Stars of Montana Sale from all of our family at Basin Angus.

The goal of our breeding program is to produce cattle that excel in the feedlot, and for end product merit, while always maintaining the fertility, fleshing ability, maternal traits, and soundness necessary for efficient beef production on rugged range conditions.

Basin Angus does not offer many registered females each year, but the females we offer are the efficient, productive kind of cattle that we like to represent our program.

We are excited about our Stars of Montana offering this year. Please feel free to call Doug if you would like to discuss any of these females, or any part of our breeding program. We look forward to seeing you in October.



Green Mountain Angus Ranch Bred Heifers



Lot 9 - Gmar Comrade D761



Gmar Comrade D761

Birth Date: 03/05/16 Cow 18454531 Tattoo: D761

Connealy Comrade 1385
18454531

Connealy Consensus 7229 #
Happy Gee of Conanga 919
Connealy Consensus #
Blue Lilly of Conanga 16
G A R New Design 5050 #
Hap Gina of Conanga 260 4965

Gmar Image Maker W034
16307324
H A Image Maker 0415 #
Gmar Onward 7241 #

Hero 6267 of R R 2418 #
H A Rito Blackcap 9038
Connealy Onward #
Gmar Really Windy 4011

CED		BW		WW		YW		CEM		MILK					
+15	.25	+2.4	.37	+50	.32	+92	.22	+9	.17	+28	.19				
CW		MARB		RE		FAT		\$W		\$F		\$G		\$B	
+31	.05	+48	.05	+56	.05	+0.11	.05	+56.96	+47.42	+34.93	+107.23				

- Individual performance: BW 68 lbs., BR 91, 205 Wt. 650 lbs., WWR 102 with 76 contemporaries.
- Dam's production: 4 BR 99, 4 NR 106.
- Grandam's production: 8 NR 104 - Pathfi nder.
- Ranks in the top 1% for CED and top 2% for BW among non-parent females.
- Connealy Comrade 1385 is the low birth weight widely used Select Sires Consensus 7229 son with strong carcass EPDs due to his 5050 dam.
- AI bred on 4-25-17 to Musgrave Aviator.
- Examined safe to Aviator and estimated due 2-1-18.



Lot 10 - Gmar Rampage D200



Gmar Rampage D200

Birth Date: 02/06/16 Cow 18460010 Tattoo: D200

Quaker Hill Rampage 0A36
18460010

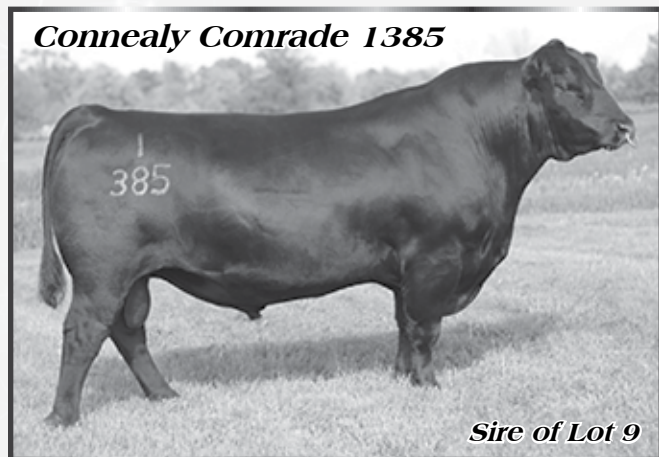
MCC Daybreak #
QHF Blackcap 6E2 of 4V16 4355
Boyd New Day 8005 #
MCC Miss Focus 134 #
Ideal 4355 of 0T26 2440
QHF Blackcap 4V16 of 1H8

Gmar Resource B200
17791751
S A V Resource 1441
Gmar Really Windy 4113

Rito 707 of Ideal 3407 7075
S A V Blackcap May 4136
A A R Really Windy 1205 #
Gmar Scotch Gal 8102

CED	BW		WW		YW		CEM		MILK		
+8	.28	+1.3	.36	+73	.31	+128	.22	+6	.15	+22	.14
CW	MARB	RE		FAT		\$W	\$F	\$G	\$B		
						+61.15	+99.17				

- Individual performance: BW 69 lbs., BR 100, 205 Wt. 724 lbs., WWR 111 with 92 contemporaries.
- Dam's production: 1 BR 100, 1 NR 111.
- Ranks in the top 2% for WW, YW and \$F among non-parent females.
- This tabulation combines two of the breeds top growth sires with the ABS Global Rampage and the Genex Resource to deliver strong predictable performance.
- AI bred on 4-25-17 to Diamond In The Rough.
- Examined safe to Diamond In The Rough and estimated due 2-1-18.



Connealy Comrade 1385

Sire of Lot 9



Quaker Hill Rampage 0A36

Sire of Lot 10

The Cattlemen's Choice...A Balanced Program



Green Mountain Angus Ranch Bred Heifers



Pen Vasech
Lot 11 - Gmar Resource D150



Pen Vasech
Lot 12 - Gmar Resource D088



Gmar Resource D150

Birth Date: 02/01/16

Cow 18454151

Tattoo: D150

SAV Resource 1441
18454151

Rito 707 of Ideal 3407 7075

SAV Blackcap May 4136

R R Rito 707 #
Ideal 3407 of 1418 076
SAV 8180 Traveler 004 #
SAV May 2397 #

Gmar Rito 6046
15323675

Rito 112 of 2536 Rito 616 #

Gmar Scotch Gal 8102

Rito 616 of 4B20 6807 #
GAR Precision 2536
R R 9440 Scotch Cap 1483 #
G M A R Cosmos E20

CED	BW		WW		YW		CEM		MILK		
I-2	.05	I+3.6	.05	I+60	.05	I+113	.05	I+1	.05	I+18	.05
CW	MARB	RE	FAT	\$W	\$F	\$G	\$B				
I+40	.05	I+.32	.05	I+.53	.05	I+.005	.05	+44.44	+71.10	+26.56	+115.21

- SAV Resource 1441 is one of the breed's most popular performance sires who topped the 2012 SAV Sale. He exhibits added muscling, structural soundness, base width, fleshing ability and overall quality combined with fertility, docility and outstanding daughters.
- The maternal tabulation blends the Pathfinder maternal sires Rito 112 and Scotch Cap 1483 that combine growth and eye appeal with strong EPDs. Scrotal EPD: I+.83.
- The service sire, Musgrave Aviator is a sleep all night heifer bull with high accuracy EPDs, great feet and docile disposition. He is setting the industry standard for calving ease, muscle and phenotype.
- **AI bred on 4-25-17 to Musgrave Aviator.**
Examined safe to Aviator and estimated due 2-1-18.



Gmar Resource D088

Birth Date: 01/28/16

Cow 18454120

Tattoo: D088

SAV Resource 1441
18454120

Rito 707 of Ideal 3407 7075

SAV Blackcap May 4136

R R Rito 707 #
Ideal 3407 of 1418 076
SAV 8180 Traveler 004 #
SAV May 2397 #

Gmar Alliance 6049 #
15334226

KMK Alliance 6595 I87 #

Gmar Force Gal 3092

Sitz Alliance 6595 #
GAR Ext 916 #
K M R Force 714 #
G M A R Miss Rye D71

CED	BW		WW		YW		CEM		MILK		
+3	.24	+2.3	.37	+73	.33	+123	.22	+5	.20	+21	.23
CW	MARB	RE	FAT	\$W	\$F	\$G	\$B				
I+37	.05	I+.13	.05	I+.51	.05	I+.023	.05	+64.98	+83.93	+15.23	+103.51

- Individual performance: BW 79 lbs., 205 Wt. 757 lbs., WWR 128 with 169 contemporaries.
- Ranks in the top 2% for WW, 3% for YW and 4% for \$F among non-parent females. Scrotal EPD: I+.89.
- Blends the high growth Genex featured sire Resource with a Pathfinder Alliance I87 dam sired by the ABS cowmaker and high altitude sire.
- **AI bred on 4-25-17 to Musgrave Aviator.**
Examined safe to Aviator and estimated due 2-1-18.

SAV Resource 1441



Sire of Lot 11-12

Musgrave Aviator



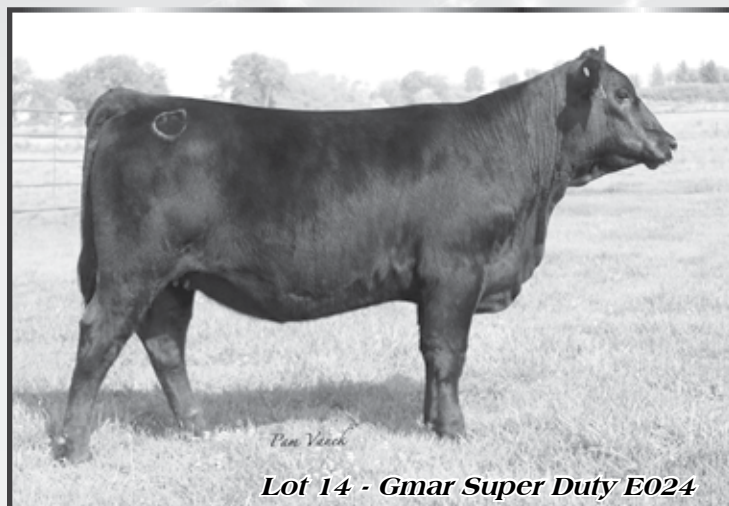
*Focus
Kylie Copeland*
ORigen
Service Sire to Lots 9, 11 & 12



Green Mountain Angus Ranch Foundation Females



Lot 13 - Gmar Motive D056



Lot 14 - Gmar Super Duty E024



Gmar Motive D056

Birth Date: 01/25/16 Cow 18454943 Tattoo: D056

Soo Line Motive 9016
18454943

HF Kodiak 5R

TLA Beauty 5R

Sitz Upward 307R #

Gmar Dateline Lady 2164

Sandy Bar Advantage 43M
Wilbar Ruby 955N
RR 7407 Rainmaker 2154
Terriene Beauty 35F

Connealy Onward #
Sitz Henrietta Pride 81M
Vermilion Dateline 7078 #
W A Ester B07

Gmar Upward X192
16597167

CED	BW		WW		YW		CEM		MILK		
+7	.25	+1.6	.37	+51	.32	+91	.22	+7	.19	+23	.22
CW	MARB		RE		FAT		\$W	\$F	\$G	\$B	
							+43.94	+46.09			

- Individual performance: BW 73 lbs., BR 99, 205 Wt. 638 lbs., WWR 108 with 169 contemporaries.
- Dam's production: 3 BR 99, 3 NR 100.
- Soo Line Motive 9016 started his career as the \$55,000 half interest feature of the 2010 Bases Loaded Sale at the National Western Stock Show. His sons have been impressive sale features at Green Mountain sales with customers that appreciate their moderate birth weights, consistency and excellent phenotype.
- Two of the breed's top growth sires are represented in the maternal lineage with Upward and VRD.
- AI bred on 4-25-17 to Diamond In The Rough.
- Examined safe to Diamond In The Rough and estimated due 2-1-18.



Gmar Super Duty E024

Birth Date: 01/24/17 Cow 18770093 Tattoo: E024

Gmar Super Duty C279
18770093

R B Active Duty 010

Gmar Image Maker X306

S A V Final Answer 0035 #

Gmar 616 Lady 5006

LCC New Standard #
B A Lady 6807 305
H A Image Maker 0415 #
Gmar Alliance 6290

Sitz Traveler 8180 #
S A V Emulous 8145
Rito 616 of 4B20 6807 #
G M A R Lady Spade 4039

Gmar Final Answer Y01
16882694

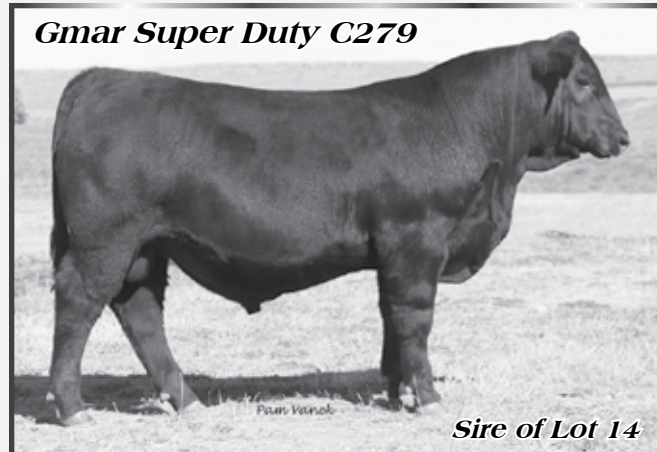
CED	BW		WW		YW		CEM		MILK		
I+1	.05	I+2.6	.05	I+62	.05	I+113	.05	I+3	.05	I+27	.05
CW	MARB		RE	FAT	\$W		\$F		\$G		\$B
I+46	.05	I+2.6	.05	I+.56	.05	I-.011	.05	+58.24	+83.88	+24.69	+137.99

- BW: 72 lbs.
- Dam's production: 2 NR 113.
- A maternal brother by Resource sold for \$9500 in the 2016 Green Mountain Angus Bull Sale and posted a 205 Wt. of 861 lbs., WWR 116.
- Her sire, Gmar Super Duty C279 was the \$50,000 Lot 1 and high selling bull in the 2015 Green Mountain Angus Ranch Bull Sale selected by Joseph Angus, SD, Spear U Angus, SD and Dave Duzan, IL.
- Super Duty a powerful, dense, big topped Active Duty son with awesome capacity, muscle shape and great agility. He was the first bull ever at Green Mountain to crack the 900 lb. barrier at 205 days.



Soo Line Motive 9016

ORigen
Sire of Lot 13



Gmar Super Duty C279

Sire of Lot 14

Idland Cattle Co. Single Lot Heifers



Lot 15 - ICC Barbara K 905-7410



ICC Barbara K 905-7410

Birth Date: 01/03/17 Cow +18811604 Tattoo: 7410

Basin Payweight 1682
17038724

Basin Payweight 006S #

21AR O Lass 7017

Vermilion Payweight J847 #
Basin Lucy 3829
HARB Pendleton 765 J H #
21AR O Lass F24A

Mill Coulee Barbara K 905 #
16568478

S A V Final Answer 0035 #

Mill Coulee Barbara K 414

Sitz Traveler 8180 #
S A V Emulous 8145
Mill Coulee Legacy 211
Mill Coulee Barbara K 122

CED	BW		WW		YW		CEM		MILK		
+6	.34	-.7	.48	+.66	.43	+.123	.39	+.10	.30	+.33	.30
CW	MARB	RE	FAT	SW	\$F	\$G	\$B				
+54	.39	+.42	.36	+.69	.36	+.014	.32	+.74.84	+.96.36	+.29.43	+.155.01

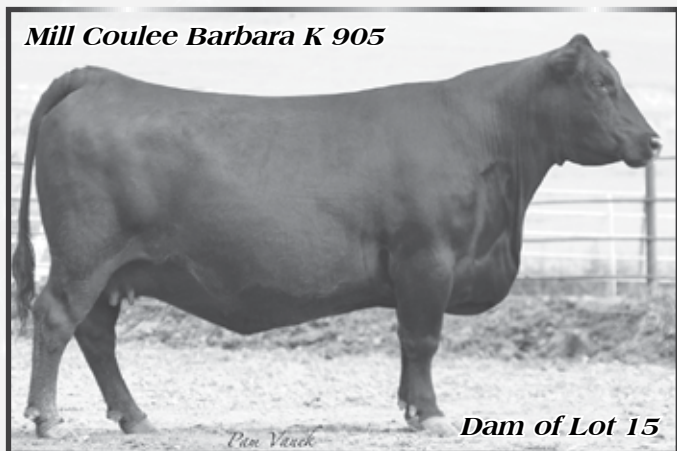
zoetis Percent Rank



CED	BW	WW	YW	DMI	YH	SC	DOC	HP	CEM	MK	MW	MH	CW	MARB	RE	FAT	TEND
11	4	16	9	44	50	31	11	18	4	15	39	42	17	67	28	54	76

- BW: 72 lbs.
- Dam's production: 3 BR 96, 3 NR 111, 3 YR 106 - Pathfinder.
- Donor dam has produced the \$50,000 ICC Payloader 5942, ORigen featured sires Mill Coulee Payweight 419, Mill Coulee Pay Raise, ICC MCF Strike Force plus \$47,500, \$21,000 and \$10,000 sons at Stevenson's Diamond Dot. Barbara K 905 at this point in time is the most influential cow in the Idland Cattle Co. genetic program. Her daughters are now starting to make a huge imprint in the ICC program as featured donors and high selling partnership females.
- Flush brothers look awesome at ICC and will either lead off the 2018 ICC bull sale or be featured at Midland. They rival the two top-selling bulls consigned by ICC and partners in 2017 that topped the event at \$60,000 and \$37,000 also sired by Basin Payweight 1682.

Mill Coulee Barbara K 905



Dam of Lot 15



Lot 16 - ICC SA Everelda Entense 7445



ICC SA Everelda Entense 7445

Birth Date: 02/23/17 Cow 18808643 Tattoo: 7445

Musgrave Aviator
17264774

Koupals B&B Identity #

MCATL Forever Lady 1429-138

Mill Coulee Pay Raise

ICC Everelda Entense 4175
17995541

ICC Everelda Entense 0717

Sitz Upward 307R #
B&B Erica 605 #
S A V Final Answer 0035 #
ALC Forever Lady R02S
Basin Payweight 107S #
Mill Coulee Barbara K 905 #
Sitz Alliance 6595 #
ER Everelda Entense K251

CED	BW		WW		YW		CEM		MILK		
+4	.34	+1.0	.50	+54	.43	+95	.38	+11	.29	+25	.30
CW	MARB		RE		FAT		SW	\$F	\$G	\$B	
+34	.38	+89	.35	+53	.35	+045	.31	+60.36	+70.86	+42.76	+142.68

zoetis Percent Rank



CED	BW	WW	YW	DMI	YH	SC	DOC	HP	CEM	MK	MW	MH	CW	MARB	RE	FAT	TEND
81	48	41	41	8	60	5	44	77	15	30	87	66	65	30	38	60	54

- BW: 78 lbs.
- Dam's production: 1 NR 105, 1 YR 109.
- Grandam's production: 4 BR 93, 4 NR 99.
- Dam was selected by Sharpe Angus, Hillsdale, WY as the \$11,000 valued bred heifer in the 2016 National Western Foundation Female Sale. Grandam is a full sister to the dam of the ORigen/ICC herdsire, Chief Justice while the foundation 4th dam is the \$300,000 Sitz Everelda Entense 023.
- A maternal brother by TR Mr Aberdeen 1068Y sold for \$5250 in the 2017 ICC Bull Sale.
- Musgrave Aviator is the popular ICC/ORigen cowman's favorite that's medium framed, full bodied and really thick.



Mill Coulee Pay Raise -
Maternal grandsire of Lot 16 and
maternal brother to Lot 15

ICC Everelda Entense 4175 -
Dam of Lot 16



Reference Donor



ICC Bon View Erica 9618

**ICC Bon View Erica 9618**

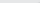
Birth Date: 02/16/09

Cow +17071679

Ref.	Donor
------	-------

Tattoo: 9618

CED		BW		WW		YW		CEM		MILK	
+7	.38	+1.1	.54	+67	.48	+123	.41	+7	.39	+26	.44
CW		MARB		RE		FAT		SW		SF	
+41	.44	+30	.40	+23	.40	+0.21	.37	+67.62	+102.84	+19.24	+130.50

zoetis Percent Rank 																	
CED	BW	WW	YW	DMI	YH	SC	DOC	HP	CEM	MK	MW	MH	CW	MARB	RE	FAT	TEND
47	55	13	14	12	13	5	35	18	94	36	81	92	35	94	83	79	5

- Her 2014 daughter brought \$30,000 in the 2014 Stars of Montana Sale to the same buyers for 1/2 interest.



Birth Date: 02/19/17

Cow 18808637

Tattoo: 7436

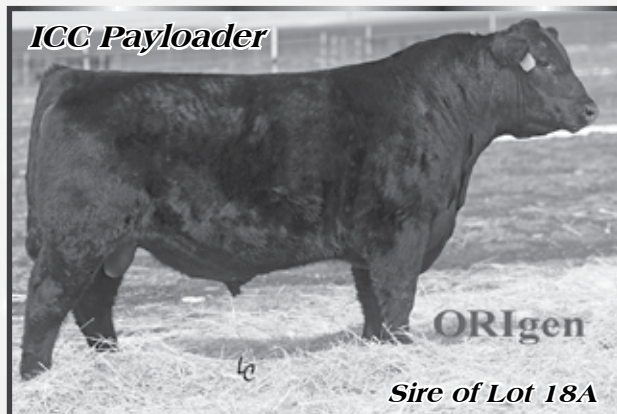
LCC Erica NG705

CED		BW		WW		YW		CEM		MILK		
+1	.27	+2.9	.42	+65	.36	+111	.31	+6	.24	+31	.26	
CW		MARB		RE		FAT		\$F		\$G		
+52	.34	+2.6	.30	+6.4	.31	+0.21	.27	+66.18		+78.59	+20.95	+143.46

zoetis Percent Rank 

CED	BW	WW	YW	DMI	YH	SC	DOC	HP	CEM	MK	MW	MH	CW	MARB	RE	FAT	TEND
56	59	25	53	28	6	9	45	34	14	30	82	86	37	91	60	84	39

- BW: 80 lbs. • Dam's production: 4 NR 112. A flush sells as Lot 18.
- A maternal sister by Mill Coulee Pay Raise was the \$30,000 top-selling heifer in the 2014 Stars of Montana Sale. She has a flush selling as Lot 17.
- ICC Payloader 5942 is the \$50,000 Lot 1 and high selling bull of the 2016 Island Cattle Co. Bull Sale and is a full brother to Mill Coulee Pay Raise. He is featured at ORlogen, ICC, Linz Heritage Angus, IN, Sharpe Angus, WY and Nemeth Angus, KS.



Sire of Lot 18A



Idland Cattle Co. - Lot 19 Is The Dam Of Basin Excitement



Lot 19 Basin Lady S532 AK



Basin Lady S532 AK

Birth Date: 01/17/06 Cow 15405297 Tattoo: 532

Vermilion Payweight J847
13469989

Vermilion Dateline 7078 #
Vermilion Lass 7969
Basin Max 806C
Basin Lady 183C
Connealy Dateline #
Vermilion Blackbird 5044 #
Top Secret 9757 E A R
Vermilion 155 Lass 2046
G T Maximum #
Basin Greystone Jannet 662X
Basin Emulation 5653 #
Basin Lady 899A

Basin Lady 306E
12326628

CED	BW		WW		YW		CEM		MILK		
+4	.33	+1.3	.43	+59	.40	+98	.39	+10	.33	+22	.34
CW	MARB		RE	FAT		\$W	\$F	\$G	\$B		
+37	.33	+1.3	.30	+50	.33	+0.02	.27	+57.01	+59.82	+17.43	+110.75

- Sells open and ready to flush.
- The dam of Basin Excitement, the deceased Genex and Hoover Angus herdsire who was the \$25,000 top-selling bull in the 2009 Basin Angus Sale.
- Production: 1 BR 98, 1 NR 119, 1 YR 115. She posts 2 RE 104.
- A very fertile embryo producer for Idland Cattle Co. after her purchase from the past Basin cooperative herd, A&K Farms, Bertrad, NE at 9 years of age. Produced a \$7000 Tour of Duty pregnancy in the 2015 NILE and two \$750 each embryo lots in the 2015 Stars of Montana Sale. This donor is a real cash cow and is a unique low birth weight Payweight daughter.
- She's stylish, feminine, correct and will generate the performance that her famous son, "Excitement" is transmitting.
- Flushed 11 times producing 155 transferable embryos for an average of 14.1 embryos per flush. Donor sells guaranteed to flush.



Basin Excitement

Basin Lucy 178E



Foundation Dam to Lots 20A-B



ICC Lucy Y145-7448

Birth Date: 02/25/17 Cow +18815165 Tattoo: 7448

Basin Excitement #
16047404

Basin Expedition R156
Basin Lady S532 AK
S A V Final Answer 0035 #
Coleman Lucy 929
Gardens Expedition #
Basin Primrose Lady 5287
Vermilion Payweight J847 #
Basin Lady 306E
Sitz Traveler 8180 #
S A V Emulous 8145
N Bar Emulation EXT #
Basin Lucy 178E

Coleman Lucy Y145
16972949

CED		BW		WW		YW		CEM		MILK	
+11	.33	-.3	.47	+61	.42	+106	.38	+15	.30	+27	.31
CW		MARB		RE		FAT		\$W		\$F	
+33	.39	+1.6	.36	+75	.36	+0.29	.32	+69.58	+77.92	+20.03	+112.76

zoetis Percent Rank ISOK

CED	BW	WW	YW	DMI	YH	SC	DOC	HP	CEM	MK	MW	MH	CW	MARB	RE	FAT	TEND
31	20	26	19	46	81	62	28	4	27	49	38	77	64	68	34	74	8

- BW: 62 lbs.
- Dam's production: 2 BR 92, 2 NR 102, 2 YR 96. She posts 2 IMF 100, RE 100.
- Grandam's production: 2 BR 97, 2 NR 112, 2 YR 110.
- A maternal sister by ICC Pay Raise 4886 sells as Lot 20B.
- Basin Excitement is the deceased Genex and Hoover Angus herdsire that is an attractive made bull with moderate frame in a curve bending package. The dam of Basin Excitement sells as Lot 19.



ICC Lucy Y145-7426

Birth Date: 02/14/17 Cow +18808624 Tattoo: 7426

ICC Pay Raise 4886
17974692

Mill Coulee Pay Raise
ICC Blackbird 0739
S A V Final Answer 0035 #
Coleman Lucy 929
Basin Payweight 107S #
Mill Coulee Barbara K 905 #
Hoover Dam #
M A R Blackbird 8067 #
Sitz Traveler 8180 #
S A V Emulous 8145
N Bar Emulation EXT #
Basin Lucy 178E

CED	BW		WW		YW		CEM		MILK		
+13	.31	-9	.48	+60	.41	+105	.36	+11	.26	+26	.28
CW	MARB		RE	FAT		\$W	\$F	\$G	\$B		
+41	.38	+1.8	.35	+59	.34	+0.44	.31	+71.17	+68.50	+15.42	+115.07

zoetis Percent Rank ISOK

CED	BW	WW	YW	DMI	YH	SC	DOC	HP	CEM	MK	MW	MH	CW	MARB	RE	FAT	TEND
43	43	27	45	28	76	30	81	17	57	60	33	56	59	86	20	66	18

- BW: 64 lbs.
- Dam's production: 2 BR 92, 2 NR 102, 2 YR 96. She posts 2 IMF 100, RE 100.
- Grandam's production: 2 BR 97, 2 NR 112, 2 YR 110.
- A maternal sister by Basin Excitement sells as Lot 20A.
- Stems from the high growth Basin Lucy 178E who is widely considered the top performance female of her generation. Sire is featured at ORigen/ABS Global.

Idland Cattle Co. Bred Heifers



Lot 21 - ICC Forever Lady 6317



ICC Forever Lady 6317

Birth Date: 02/19/16 Cow 18556454 Tattoo: 6317

ICC Pay Raise 4875
17877177

Mill Coulee Pay Raise

ICC Eisa Evergreen 7477

N B C

ICC Forever Lady 4176
17995542

ICC Forever Lady 1826

Basin Payweight 107S #
Mill Coulee Barbara K 905 #
G A R Predestined #
ER Eisa Evergreen K215
S A V Final Answer 0035 #
Diamond Lucy 75U2
Hoover Dam #
GDAR Forever Lady 2388

CED	BW		WW		YW		CEM		MILK		
+4	.34	+1.6	.51	+63	.44	+106	.34	+11	.24	+27	.26
CW	MARB	RE	FAT	\$W	\$F	\$G	\$B				
+46	.37	+40	.32	+27	.32	+018	.28	+69.59	+62.25	+23.59	+126.33

zoetis Percent Rank

CED	BW	WW	YW	DMI	YH	SC	DOC	HP	CEM	MK	MW	MH	CW	MARB	RE	FAT	TEND
71	53	11	69	42	21	7	91	55	24	78	89	66	42	72	76	73	50

- Individual performance: BW 78 lbs., 205 Wt., 669 lbs., WWR 104 with 25 contemporaries.
- Dam's production: 1 NR 104.
- Grandam's production: 2 NR 104.
- Foundation 3rd dam is sired by Sitz Traveler 6802 back to GDAR SVF Forever Lady 226D, the full sister to "216 LTD" sired by Traveler 124 GDAR.
- Her sire, ICC Pay Raise 4875 was the \$8500 top-selling 2-year old in the 2016 ICC Bull Sale selected by Charlie Swenson, Pine River, MN. He was a bull the ICC crew was sure would be the one to go forward with following Mill Coulee Pay Raise's death. The 2014 ICC tour book even proclaimed him as the best bull ever produced in the program. Unfortunately his dam and him were carriers of the Developmental Duplication Condition (DDC). He did run cleanup at ICC and this daughter tested clean for the condition. Pay Raise 4875 currently posts CED +15, BW -2.0, WW +62, YW +107 with Mb. +.82 and RE +.60.
- This bred heifer was originally selected by Don Ravellette for a feature in the 2017 NILE. With the eastern Montana drought this summer and going over 100 miles to North Dakota to put up hay, halter breaking a bred heifer didn't appeal to the ICC crew so the backup plan for the Stars of Montana Sale makes more sense where they are not halter broke and are in sale pens so...here she is.
- **AI bred on 5-13-17 to 3F Epic 4631.**
Examined safe to Epic and estimated due 2-19-18.



ICC Pay Raise 4875 -
Sire of Lot 21



ICC Blackclass 6360

Birth Date: 03/05/16 Cow 18514881 Tattoo: 6360

Mill Coulee Payweight 419
17994830

Basin Payweight 107S #

Mill Coulee Barbara K 905 #

S A V Final Answer 0035 #

ICC Blackclass 2937
17472938

ICC Blackclass 5378

Vermilion Payweight J847 #
Basin Lucy 3829
S A V Final Answer 0035 #
Mill Coulee Barbara K 414
Sitz Traveler 8180 #
S A V Emulous 8145
G A R Grid Maker #
G A R Ambush 915

CED		BW		WW		YW		CEM		MILK	
+10	.30	+9	.49	+62	.43	+106	.33	+10	.23	+20	.25
CW		MARB		RE		FAT		\$F		\$G	
+27	.35	+51	.30	+59	.31	-.001	.26	+55.67	+66.58	+38.36	+107.55

zoetis Percent Rank

CED	BW	WW	YW	DMI	YH	SC	DOC	HP	CEM	MK	MW	MH	CW	MARB	RE	FAT	TEND
29	39	41	78	52	62	55	20	65	8	55	4	9	82	58	41	42	45

- Individual performance: BW 79 lbs., 205 Wt., 678 lbs., WWR 99 with 30 contemporaries.
- Dam's production: 2 NR 99, 1 YR 99.
- Traces to the same cow family that produced the calving ease, high marbling sire, Sleep Easy.
- Ranks in the top 15% for WW and top 20% for YW EPDs among non-parent females.
- Double bred to the breed icon, SAV Final Answer 0035. Grandam's production: 7 BR 98, 7 NR 106, 4 YR 102.
- Mill Coulee Payweight 419 ranks in the top 1% for WW and YW with +80 and +137 EPDs. Yet, with all that growth and performance has a DMI genomic score of 10 meaning he does more with less.
- **AI bred on 5-13-17 to Musgrave Aviator.**
Examined safe to Aviator and estimated due 2-19-18.

What a exciting year for ICC and Partners! Producing the record-setting heifer at The National Finals Sale in Las Vegas; one of the top high-selling heifers at The National Western Foundation Female Sale in Denver, and not to be outshined by the females, our 2 consignments at the Midland Bull Test brought honors of 1 & 2 high sellers. Along with selling ICC Pay Raise 4886 to ABS and the purchase of Musgrave Aviator. We are humbled and overwhelmed with thankfulness. Thankful for great customers and partners whom share our vision and pride. Thankful to be doing what we love and thankful for a great extended family in the Stars of Montana.

Handpicked by Gary Wall straight from the top of the ICC herd. This is the first time Glen has opened up the ET pen with a "all gates open" approach. Offering a multi-trait genetic package this great set of females demonstrates the depth of maternal strength running here at ICC.

This year's Stars of Montana Sale consignments have an emphasis on Barbara K 905 and her family, Pay Raise, one of the top all-time parent sires birth to yearling spread bull.

Topping the list, a standout and paternal sister to the \$200,000 heifer that may be every bit as great. Along with an Aviator heifer and a flush out of one of Pay Raise's finest daughters. Some of the first daughters to Aviator sell and the first daughters anywhere to sell out of Pay Raise 4886, deemed as best son by Pay Raise.

Tagged as ICC's cash cow, we are selling the dam to the deceased Genex stud, Basin Excitement. Only letting her go because of her overwhelming ability to produce embryos.

We're also selling two excellent bred heifers sired by JVC Cavalry V3326, the "secret weapon: sire" now featured at Select Sires.

The ICC Crew

A Brand That Stands For
IDLAND
CATTLE
CUSTOMER
COMMITMENT
With A Smile!

Glen, Connie,
Reece Idland & Brooke Vincent
PO Box 329 • Circle, MT 59215
406-485-2292 • icc@midrivers.com
idlandcattleco.com



Idland Cattle Co. Lots 24 and 25 Are Flush Sisters



ICC Eisa Erica 6369

Birth Date: 03/09/16 Cow 18514883 Tattoo: 6369

Mill Coulee Payweight 419
17994830

Basin Payweight 107S # Vermilion Payweight J847 #
Basin Lucy 3829
S A V Final Answer 0035 #
Mill Coulee Barbara K 905 #
Mill Coulee Barbara K 414
SydGen C C & 7 #
Erica of Ellston X16
Pass Creek Marriott 4039
Miss Pass Creek Traveler 012

ICC Eisa Erica 1891
17144804

MS Pear Marriott 4039 7152

CED		BW		WW		YW		CEM		MILK	
+1	.32	+2.2	.52	+48	.46	+80	.36	+5	.26	+24	.28
CW		MARB		RE		FAT		\$F		\$G	
+27	.37	-.26	.32	+48	.33	+0.31	.29	+45.40	+46.71	-.08.43	+70.91

zoetis Percent Rank

CED	BW	WW	YW	DMI	YH	SC	DOC	HP	CEM	MK	MW	MH	CW	MARB	RE	FAT	TEND
81	67	63	84	2	53	32	42	70	21	28	39	32	51	100	49	49	80

- Individual performance: BW 74 lbs., BR 98, 205 Wt. 674 lbs., WWR 98 with 30 contemporaries.
- Dam's production: 3 BR 95, 3 NR 100. She posts a calving interval: 4@358 days.
- Grandam's production: 9 BR 98, 9 NR 103, 6 YR 102. She stayed in production in the ICC ET program until 17 years of age. Her daughters combine superior phenotype and production.
- Mill Coulee Payweight 419 is a high growth 107S son with moderate DMI data generating feed efficiency and conversion.
- AI bred on 5-14-17 to Musgrave Aviator.
- Vet examined safe to Aviator and estimated due 2-20-18.



ICC Blackbird 2956

Birth Date: 03/10/12 Cow +17472952 Tattoo: 2956

Sitz Upward 307R #
14963730

Connealy Onward #
Sitz Henrietta Pride 81M
Sitz Traveler 8180 #
Jolly R Blackbird 184A
Connealy Lead On #
Altune of Conanga 6104
Sitz Value 7097 #
Sitz Henrietta Pride 1370
G D A R Traveler 71 #
Sitz Everelda Entense 1137
Woodhill Scotchman
Blackbird of R R 5304 #

M A R Blackbird 8067 #
13173131

CED	BW		WW		YW		CEM	MILK			
+9	.37	+1.0	.53	+59	.47	+112	.42	+11	.38	+30	.42
CW	MARB	RE	FAT	\$W	\$F	\$G	\$B				
+46	.43	+.28	.39	+.56	.39	+.004	.36	+63.50	+71.01	+24.17	+124.37

zoetis Percent Rank

CED	BW	WW	YW	DMI	YH	SC	DOC	HP	CEM	MK	MW	MH	CW	MARB	RE	FAT	TEND
61	53	20	9	98	75	27	37	5	40	13	47	41	19	98	43	57	16

- Production: 3 NR 103, 1 YR 104.
- Dam's production: 9 BR 96, 9 NR 107, 7 YR 105 - Pathfinder.
- A maternal sister to the dam of ICC Pay Raise 4886 featured at ORigen and ABS Global.
- Sons have averaged \$5250 in 2015 & 2017 ICC Bull Sales. Flush sister sells as Lot 25.
- AI bred on 5-24-17 to ICC Payloader 5942 and estimated due 3-2-18.
- Service sire is the \$50,000 top-selling bull in the 2016 ICC Bull Sale sired by Basin Payweight 107S and a full brother to Mill Coulee Pay Raise.



Lot 24A - ICC Blackbird 2956-7453



ICC Blackbird 2956-7453

Birth Date: 03/01/17 Cow 18808638 Tattoo: 7453

ICC Pay Raise 4886
17974692

Basin Payweight 107S #
Mill Coulee Barbara K 905 #
Hoover Dam #
M A R Blackbird 8067 #
Connealy Onward #
Sitz Henrietta Pride 81M
Sitz Traveler 8180 #
Jolly R Blackbird 184A

ICC Blackbird 2956
17472952

M A R Blackbird 8067 #

CED		BW		WW		YW		CEM		MILK	
+8	.05	+1.2	.05	+67	.05	+125	.05	+10	.05	+26	.05
CW		MARB		RE		FAT		\$W		\$B	
+51	.05	+1.23	.05	+1.58	.05	+1.002	.05	+67.09	+89.27	+21.14	+132.48

- BW: 78 lbs. Dam's production: 3 NR 103, 1 YR 104.
- Grandam's production: 9 BR 96, 9 NR 107, 7 YR 105 - Pathfinder.
- Double bred to M A R Blackbird 8067. She is the grandam of the sire and the dam.
- Sire is featured at ORigen/ABS Global and was the top-selling bull in the 2015 ICC Bull Sale.
- Genomic test data will be available sale day.

Ref MUSGRAVE AVIATOR

Sire Birth Date: 01/30/12 Bull 17264774 Tattoo: 542

Koupals B&B Identity
16710463

Sitz Upward 307R #
Connealy Onward #
Sitz Henrietta Pride 81M
G A R Exaltation 3144 #
B&B Erica 4064

MCATL Forever Lady 1429-138
16483505

S A V Final Answer 0035 #
S A V Emulous 8145
Leachman Right Time #
ALC Forever Lady K14P

CED	BW		WW		YW		CEM		MILK		
+12	.78	-2.0	.91	+52	.89	+99	.81	+17	.52	+29	.49
CW	MARB		RE	FAT		\$W		\$F	\$G		\$B
+34	.51	+.40	.45	+.79	.46	+.043	.45	+60.73	+73.37	+30.21	+125.60

CED	BW	WW	YW	DMI	YH	SC	DOC	HP	CEM	MK	MW	MH	CW	MARB	RE	FAT	TEND
9	2	28	18	31	63	18	51	16	6	17	46	38	45	70	29	69	33

- The cowman's favorite at ORigen...he's medium framed, full bodied and really thick plus he's a sleep all night heifer bull.
- Homozygous TT for the Leptin gene that improves feed efficiency, appetite, marbling and maternal strength.
- High accuracy EPDs, great feet and docile disposition.

Reference Sire



Musgrave Aviator

Idland Cattle Co. Foundation Females



ICC Blackbird 2941

Birth Date: 03/05/12 Cow +17472946 Tattoo: 2941

Sitz Upward 307R #
14963730

Connealy Onward #

Sitz Henrietta Pride 81M

Sitz Traveler 8180 #

Jolly R Blackbird 184A

Connealy Lead On #
Altune of Conanga 6104
Sitz Value 7097 #
Sitz Henrietta Pride 1370
G D A R Traveler 71 #
Sitz Everelda Entense 1137
Woodhill Scotchman
Blackbird of R R 5304 #

CED	BW		WW		YW		CEM		MILK		
+11	.37	-.4	.54	+51	.48	+104	.43	+12	.38	+33	.42
CW	MARB	RE	FAT	\$W	\$F	\$G	\$B				
+37	.44	+.40	.40	+.43	.40	+.019	.36	+58.59	+61.84	+27.73	+109.51

zoetis Percent Rank

CED	BW	WW	YW	DMI	YH	SC	DOC	HP	CEM	MK	MW	MH	CW	MARB	RE	FAT	TEND
10	14	53	14	94	55	14	35	16	13	31	49	45	37	80	79	95	57

- Production: 3 BR 90, 3 NR 102, 1 YR 102.
- Dam's production: 9 BR 96, 9 NR 107 - Pathfinder. She produced in the Idland ET program until 17 years of age.
- A maternal sister to the dam of ICC Pay Raise 4886 featured at ORigen and ABS Global.
- Flush sister sells as Lot 24. Sons have averaged \$4500 in the 2016 & 2017 ICC bull sales.
- AI bred on 5-21-17 to ICC MCF Strike Force and estimated due 2-27-18.
- Service sire is \$15,000 top-selling bull in the 2017 ICC Bull Sale sired by RB Active Duty 010 (Reg. 18584463).



ICC Blackbird 2941-7431

Birth Date: 02/15/17 Cow 18808636 Tattoo: 7431

ICC Payloader
18161548

Basin Payweight 107S #

Mill Coulee Barbara K 905 #

Sitz Upward 307R #

M A R Blackbird 8067 #

Vermilion Payweight J847 #
Basin Lucy 3829
S A V Final Answer 0035 #
Mill Coulee Barbara K 414

ICC Blackbird 2941
17472946

CED	BW		WW		YW		CEM		MILK		
+11	.30	-1.4	.45	+56	.39	+115	.34	+12	.26	+30	.28
CW	MARB		RE	FAT		\$W	\$F	\$G	\$B		
+51	.36	+55	.33	+84	.33	+0.01	.29	+58.85	+84.21	+38.43	+153.46

zoetis Percent Rank

CED	BW	WW	YW	DMI	YH	SC	DOC	HP	CEM	MK	MW	MH	CW	MARB	RE	FAT	TEND
8	2	48	4	61	26	12	6	23	7	52	28	25	22	48	19	67	29

- BW: 70 lbs. Dam's production: 3 BR 90, 3 NR 102, 1 YR 102.
- Grandam's production: 9 BR 96, 9 NR 107, 7 YR 105 - Pathfinder.
- Ranks in the top 10% for BW, YW, SC, RE & \$B among non-parent females sired by the \$50,000 top-selling bull in the 2016 ICC Bull Sale featured in the ORigen AI lineup.

ICC MCF Strike Force



Service Sire to Lot 25

EPDS	CED	BW	WW	YW	CEM	MILK	MB	RE	\$B
	+4	+3.4	+83	+145	+11	+21	+18	+80	+167.31

STARS OF MONTANA



Lot 26 - JVC Blackcap 645



JVC Blackcap 645

Birth Date: 2/21/16 Cow 18417248 Tattoo: 645

JVC Cavalry V3326
17784803

Connealy Cavalry 1149

Brusett Forever W857

Hoover Dam #

K AF Blackcap 9053

Connealy Consensus #
Brista of Conanga 927T
TC Franklin 619 #
Brusett Forever 827 #
SydGen C C & 7 #
Erica of Ellston C124 #
Sitz Traveler 043 #
Blackcap of R R 5367

ICC Blackcap 1852
+17144830

CED	BW		WW		YW		CEM		MILK		
+9	.34	+1.2	.52	+72	.46	+133	.42	+8	.26	+16	.28
CW	MARB		RE		FAT		\$W	\$F	\$G	\$B	
+66	.39	+.64	.34	+.67	.35	+.003	.31	+59.41	+94.08	+36.27	+163.34

zoetis Percent Rank

CED	BW	WW	YW	DMI	YH	SC	DOC	HP	CEM	MK	MW	MH	CW	MARB	RE	FAT	TEND
39	27	15	10	62	75	66	49	25	52	74	23	67	10	32	39	51	37

- Individual performance: BW 72 lbs., BR 95, 205 Wt. 639 lbs., WWR 103, 365 Wt. 962 lbs., YWR 105.
- Dam is now featured at GG&T Cattle Co., Quinter, KS.
- Dam's production: 3 BR 87, 3 NR 102, 1 YR 105.
- Grandam was selected in the Montana Angus Dispersion and stems from the same cow family that produced RR Playmaker. Foundation 3rd dam, Blackcap of RR 5367 is the dam of Northern Improvement and RR Scotch Cap 9440.
- AI bred on 5-15-17 to ICC Pay Raise 4886.
- Examined safe and estimated due 2-21-18 to ICC Pay Raise 4886.

ICC Pay Raise 4886



Service Sire to Lots 26-27

EPDS	CED	BW	WW	YW	CEM	MILK	MB	RE	\$B
	+6	+1.3	+74	+138	+9	+21	+18	+60	+140.71

ULTIMATE REAL WORLD PERFORMANCE GENETICS



Lot 27 - ICC Queen Kimberly 6352



ICC Queen Kimberly 6352

Birth Date: 03/02/16 Cow 18514868 Tattoo: 6352

JVC Cavalry V3326
17784803

Connealy Cavalry 1149

Brusett Forever W857

Connealy Final Product #

ICC Queen Kimberly 0749

Connealy Consensus #
Brista of Conanga 927T
TC Franklin 619 #
Brusett Forever 827 #

Connealy Product 568
Ebonista of Conanga 471 #
S A V Pioneer 7301 #
ICC Queen Kimberly 5265

ICC Queen Kimberly 4117
17877171

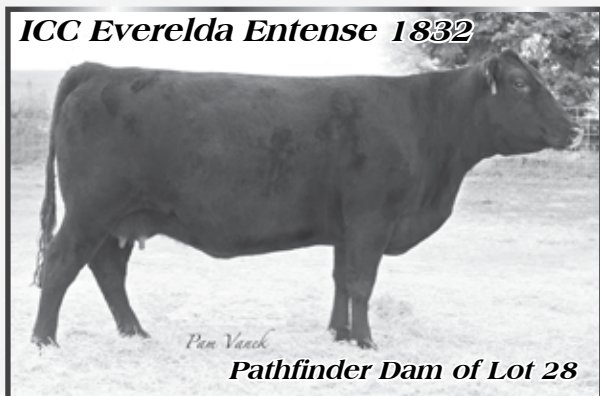
CED	BW		WW		YW		CEM		MILK		
+4	.37	+2.6	.54	+62	.47	+120	.38	+8	.27	+16	.29
CW	MARB		RE		FAT		\$W	\$F	\$G	\$B	
+42	.40	+34	.35	+64	.35	+038	.32	+47.38	+82.52	+24.70	+119.13

zoetis Percent Rank

CED	BW	WW	YW	DMI	YH	SC	DOC	HP	CEM	MK	MW	MH	CW	MARB	RE	FAT	TEND
57	46	10	3	57	41	4	80	13	51	82	61	94	24	63	49	97	56

- Individual performance: BW 76 lbs., 205 Wt., 681 lbs., WWR 106 with 25 contemporaries.
 - Dam's production: 1 NR 106.
 - Traces to the same cow family that produced Alberda Traveler 416.
 - Extremely strong genomic scores for WW, YW and Scrotal traits.
 - JVC Cavalry V3326 was the \$22,000 top-selling bull in the 2014 Jocko Valley Bull Sale and is now featured in the Select Sires AI lineup. He sired a \$110,000 son and \$60,000 daughter in the 2017 Rishel Angus Sale in Nebraska.
 - AI bred on 5-13-17 to ICC Pay Raise 4886.
- Examined safe to 4886 and estimated due 2-19-18.

**Every One Could
Use A Pay Raise**



ICC Everelda Entense 1832

Pathfinder Dam of Lot 28

ICC Pay Raise 4885



Service Sire of Lot 28



ICC Everelda Entense 6331

Birth Date: 02/22/16 Cow 18514854 Tattoo: 6331

TR Mr Aberdeen 1068Y
17074729

TC Aberdeen 759 #

TR Ms Erica 8035U

ER Justice N013 #

ICC Everelda Entense 1832 #
17699183

ICC Everelda Entense 8530

C R A Bextor 872 5205 608 #
TC Blackbird 4034 #
S S Objective T510 OT26 #
TR Ms Erica 5052R
ER Falcon K177 #
JR Henrietta 001L
Sitz Alliance 6595 #
ER Everelda Entense K251

CED	BW		WW		YW		CEM		MILK		
+6	.34	+1.0	.52	+54	.46	+98	.38	+6	.27	+28	.29
CW	MARB		RE		FAT		\$W	\$F	\$G	\$B	
+39	.39	+58	.34	+63	.35	+000	.31	+53.54	+55.05	+39.10	+128.54

zoetis Percent Rank

CED	BW	WW	YW	DMI	YH	SC	DOC	HP	CEM	MK	MW	MH	CW	MARB	RE	FAT	TEND
67	81	37	25	64	18	48	74	56	83	65	32	34	64	48	40	14	65

- Individual performance: BW 71 lbs., BR 94, 205 Wt., 715 lbs., WWR 104 with 30 contemporaries.
 - Dam's production: 4 BR 95, 4 NR 105, 3 YR 104 - Pathfinder. She sold in the 2016 Stars of Montana Sale to Snowy Mountain Angus, Garneill, MT.
 - Grandam's production: 5 NR 108, 2 YR 113.
 - A maternal brother by Tour of Duty sold for \$9500 in the 2016 ICC Bull Sale.
 - TR Mr Aberdeen 1068Y is one of the densest, deepest ribbed, high capacity bulls with great scrotal genetics and excellent genomic data. He is featured at ORigen, Idland Cattle Co. and Malek Angus.
 - The service sire, ICC Payweight 4885 is the calving ease Mill Coulee Pay Raise son that was the Lot 1 feature in the 2015 ICC Bull Sale. His maternal brother by Hoover Dam was the \$12,000 top-selling bull in the 2011 ICC Bull Sale selected by Frosty Creek Ranch, Roundup, MT.
 - AI bred on 5-13-17 to ICC Pay Raise 4885.
- Examined safe to 4885 and estimated due 2-19-18.

TR Mr Aberdeen 1068Y



Sire of Lots 28, 29A, 30-31

Idland Cattle Co. Heifer Calves



ICC Erica X16-7457

Birth Date: 03/05/17 Cow +18808630 Tattoo: 7457

TR Mr Aberdeen 1068Y
17074729

TC Aberdeen 759 #
TR Ms Erica 8035U
S A Neutron 377 #
Shottish V047
C R A Bextor 872 5205 608 #
TC Blackbird 4034 #
S S Objective T510 OT26 #
TR Ms Erica 5052R
S A F Neutron #
S A Queen Susan 102 #
Scotch Cap #
Dal Bairn Erica 37

Erica of Ellston X16
13669273

CED	BW		WW		YW		CEM		MILK		
+10	.34	+3	.49	+55	.44	+103	.40	+12	.28	+17	.30
CW	MARB	RE	FAT	\$W	\$F	\$G	\$B				
+33	.39	+55	.35	+71	.35	+0.031	.32	+47.89	+60.74	+36.82	+113.34

zoetis Percent Rank

CED	BW	WW	YW	DMI	YH	SC	DOC	HP	CEM	MK	MW	MH	CW	MARB	RE	FAT	TEND
44	46	23	21	20	45	26	22	19	17	98	41	28	33	49	15	79	33

• BW: 72 lbs.

• Dam's production: 10 BR 94, 10 NR 107, 10 YR 106. She posts 20 RE 104 with a calving interval: 10@363 days.

• A maternal sister by Basin Excitement sells as Lot 29B. A maternal sister to the high RE sire, Hoover Home Run featured at ICC and ORigen. A maternal sister by CC&7 sold in the 2014 NILE to Crouch Angus Valley, IA and her first daughter by Tour of Duty was a popular sale feature at the 2017 National Western Foundation Female Sale.



ICC Erica X16-7458

Birth Date: 03/05/17 Cow +18815169 Tattoo: 7458

Basin Excitement #
16047404

Basin Expedition R156
Basin Lady S532 AK
S A Neutron 377 #
Shottish V047
Gardens Expedition #
Basin Primrose Lady 5287
Vermilion Payweight J847 #
Basin Lady 306E
S A F Neutron #
S A Queen Susan 102 #
Scotch Cap #
Dal Bairn Erica 37

Erica of Ellston X16
13669273

CED	BW		WW		YW		CEM		MILK		
+11	.36	+7	.49	+60	.44	+110	.41	+12	.34	+26	.35
CW	MARB	RE	FAT	\$W	\$F	\$G	\$B				
+37	.40	+50	.38	+59	.37	+0.033	.34	+65.88	+81.19	+32.41	+129.89

zoetis Percent Rank

CED	BW	WW	YW	DMI	YH	SC	DOC	HP	CEM	MK	MW	MH	CW	MARB	RE	FAT	TEND
44	28	16	26	17	84	10	10	1	6	56	46	42	16	71	31	76	16

• BW: 74 lbs.

• Dam's production: 10 BR 94, 10 NR 107, 10 YR 106. She posts 20 RE 104 with a calving interval: 10@363 days.

• A maternal sister by TR Mr Aberdeen 1068Y sells as Lot 29A. A maternal sister to Hoover Home Run featured at ORigen and Idland Cattle Co. A maternal sister by CC&7 sold for \$4250 to Crouch Angus Valley, IA in the 2014 NILE.

• Basin Excitement was the \$25,000 top-selling bull in the 2009 Basin Angus Sale selected by Hoover Angus in Iowa. This now deceased Genex curvebender is the same age as Hoover Dam selling the same year. His dam sells as Lot 19.



Hoover Home Run -
Maternal Brother
to Lots 29A-B



Erica of Ellston L40 -
Dam of Lot 30



ICC DDot Erica L40-7466

Birth Date: 03/10/17 Cow 18808644 Tattoo: 7466

TR Mr Aberdeen 1068Y
17074729

TC Aberdeen 759 #
TR Ms Erica 8035U
SydGen C C & 7 #
Erica of Ellston C124 #
C R A Bextor 872 5205 608 #
TC Blackbird 4034 #
S S Objective T510 OT26 #
TR Ms Erica 5052R
S A F Connection #
SydGen Forever Lady 4087
TC Gridiron 258 #
Erica of Ellston V65

Erica of Ellston L40
17306300

CED	BW	WW	YW	CEM	MILK						
+3	.33	+2.7	.49	+58	.43	+104	.38	+7	.27	+25	.28
CW	MARB	RE	FAT	\$W	\$F	\$G	\$B				
+37	.39	+72	.35	+61	.35	+0.040	.32	+51.67	+62.77	+39.23	+126.06

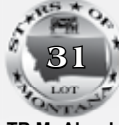
zoetis Percent Rank

CED	BW	WW	YW	DMI	YH	SC	DOC	HP	CEM	MK	MW	MH	CW	MARB	RE	FAT	TEND
44	79	57	47	42	45	42	54	68	57	71	65	64	79	30	30	66	55

• BW: 76 lbs.

• Dam's production: 1 NR 103. She is a full sister to Hoover Dam co-owned by ICC and Stevenson's Diamond Dot, Hobson, MT.

• Grandam's production: 6 BR 96, 6 NR 114, 6 YR 106. She posts 37 IMF 101, RE 102.
• Great-grandam's production: 7 NR 103, 7 YR 102. She posts 7 IMF 103, RE 105.
• Two maternal sibs sired by Tour of Duty sold for \$10,000 & \$6000 in the 2016 Diamond Dot Sale while a full brother to them sold for \$15,000 in the 2016 ICC Bull Sale in the ORigen sire lineup. A maternal sister by Tour sold in the World Class Muscle for \$10,000. • It is rare to find a calving ease bull with as much rib cage and muscle like Mr Aberdeen. His son's have been very popular at ICC Bull Sales.



ICC RI Ginger 306-748

Birth Date: 03/13/17 Cow 18812026 Tattoo: 748

TR Mr Aberdeen 1068Y
17074729

TC Aberdeen 759 #
TR Ms Erica 8035U
Hoover Dam #
ICC Reece's Precision 5402
C R A Bextor 872 5205 608 #
TC Blackbird 4034 #
S S Objective T510 OT26 #
TR Ms Erica 5052R
SydGen C C & 7 #
Erica of Ellston C124 #
L C R Precision 112
MS Pear Marriott 4039 7152

ICC Reece's Ginger 306
17740489

CED	BW	WW	YW	CEM	MILK						
+11	.30	+3	.44	+50	.39	+96	.35	+7	.24	+29	.25
CW	MARB	RE	FAT	\$W	\$F	\$G	\$B				
+27	.35	+99	.32	+61	.32	+0.029	.28	+59.24	+56.78	+49.41	+116.57

zoetis Percent Rank

CED	BW	WW	YW	DMI	YH	SC	DOC	HP	CEM	MK	MW	MH	CW	MARB	RE	FAT	TEND
12	13	66	49	34	99	58	54	61	91	82	96	86	77	15	43	81	50

• BW: 76 lbs.

• Dam's production: 2 NR 101, 1 YR 103.
• Grandam's production: 5 NR 107, 3 YR 104. She posts 5 IMF 100, RE 104.
• A maternal brother by Mill Coulee Payweight 419 sold for \$4750 in the '17 ICC Sale.
• Dam is from the moderate frame, easy fleshing Ginger cow family developed by Reece Idland. • Mr Aberdeen is one of the densest, deepest ribbed, high capacity bulls with great scrotal genetics and excellent genomic data to surface in years. Take advantage of this daughter with calving ease and high marbling genetics.



Lot 31 - ICC RI Ginger 306-748



Lot 32 - JVC Blackcap 742



JVC Blackcap 742

Birth Date: 01/21/17 Cow 18735815 Tattoo: 742

Musgrave Aviator
17264774

Koupals B&B Identity #

MCATL Forever Lady 1429-138

B C Lookout 7024 #

B C C Blackcap B W 867-5003

Sitz Upward 307R #
B&B Erica 605 #
S A V Final Answer 0035 #
ALC Forever Lady R02S
O C C Legend 616L
Gibbet Hill Mignonne E37
B C C Bushwacker 41-93 #
G A R Scotch Cap 867 #

CED		BW		WW		YW		CEM		MILK	
+10	.35	+1	.49	+56	.43	+98	.39	+11	.30	+22	.32
CW		MARB		RE		FAT		\$W		\$F	
+36	.38	+34	.35	+75	.35	+018	.32	+61.17	+64.48	+29.57	+123.80

zoetis Percent Rank

CED	BW	WW	YW	DMI	YH	SC	DOC	HP	CEM	MK	MW	MH	CW	MARB	RE	FAT	TEND
38	31	30	36	4	98	91	20	84	72	44	73	73	68	45	12	38	73

- BW: 68 lbs.
- Dam's production: 4 NR 105, 2 YR 114. She posts 2 IMF 110, RE 102, Rib Fat 87, Rump Fat 100.
- Grandam's production: 5 NR 109. She served as a donor in the Byrd, Coleman and Fairview programs.
- A maternal sister by LB JVC Black Canyon 101 raised the \$7000 top-selling bull sired by Cavalry in the 2017 Jocko Valley Bull Sale.
- Offers low birth, high RE and top feed efficiency genetics and was selected by ICC and Gary Wall as the featured Lot 63 pair in the 2017 Jocko Valley Dispersion in April, 2017. The foundation 3rd dam, GAR Scotch Cap 867 is a historic name-brand donor that has greatly impacted the Angus breed.
- Musgrave Aviator is a sleep-all-night heifer bull with high accuracy EPDs, great feet and docile disposition. He is setting the industry standard for calving ease, muscle and phenotype.



G A R Scotch Cap 867

Foundation Dam of Lot 32



Lot 33 - ICC Miss Wix 6350



ICC Miss Wix 6350

Birth Date: 03/01/16 Cow 18514857 Tattoo: 6350

R B Tour Of Duty 177
16984170

Werner War Party 2417 #

B A Lady 6807 305

Hyline Right Time 338 #

Miss Wix 415 of Mc Cumber

ICC Miss Wix 5252
15457625

Connealy Onward #
BAAR USA Lady Jaye 489
Vermilion Dateline 7078 #
G D Lady Hi Flyer 302
Leachman Right Time #
Hyline Pride 265
D H D Traveler 6807 #
Miss Wix 255 of Mc Cumber #

CED	BW		WW		YW		CEM		MILK		
+10	.35	+1.4	.52	+47	.46	+79	.39	+15	.29	+27	.32
CW	MARB		RE	FAT		\$W		\$F	\$G	\$B	
+25	.40	+46	.36	+32	.36	+000	.32	+50.79	+15.05	+33.37	+77.76

zoetis Percent Rank

CED	BW	WW	YW	DMI	YH	SC	DOC	HP	CEM	MK	MW	MH	CW	MARB	RE	FAT	TEND
49	55	41	62	93	59	88	37	46	15	19	79	85	53	68	80	73	31

- Individual performance: BW 74 lbs., BR 99, 205 Wt., 677 lbs., WWR 99 with 30 contemporaries.
- Dam's production: 8 BR 97, 8 NR 106, 5 YR 105.
- A maternal brother by War Party, ICC Wagon Train 3668 was the leadoff and high selling bull at the 2014 ICC Bull Sale selected by Byron Carter, ND.
- RB Tour of Duty 177 is an industry giant that stamps his progeny with tremendous length, performance and great dispositions.
- AI bred on 5-12-17 to Musgrave Aviator.

Examined safe to Aviator and estimated due 2-18-18.

Proven Cow Families



Musgrave Aviator

Sire of Lot 32 & Service Sire to Lot 33

Split Diamond Ranch Ten Speed Bred Heifers



Lot 34 - SD Lady 6217 W



SD Lady 6217 W

Birth Date: 02/05/16 Cow +18562362 Tattoo: 6217

SAV Ten Speed 3022
17633563

RB Lady 7125-2933
17264430

AAR Ten X 7008 SA # Mytty In Focus #
AAR Lady Kelton 5551 #
SAV Bismarck 5682 #
SAV Madame Pride 1134 # SAV Madame Pride 9100
GAR Objective 7125 # S S Objective T510 OT26 #
GAR 1407 New Design 1463
LCC New Standard #
RB Lady Standard 308-933 B A Lady 6807 308

CED		BW		WW		YW		CEM		MILK	
+6	.38	+1.4	.57	+59	.50	+105	.46	+5	.31	+33	.32
CW		MARB		RE		FAT		\$F		\$G	
+39	.44	+.69	.39	+.54	.39	+.008	.36	+64.94	+79.42	+40.88	+147.34

- Individual performance: 205 Wt. 614 lbs., WWR ET, 365 Wt. 825 lbs., YWR ET.
- Dam's production: 3 NR 113, 2 YR 119, 10 IMF 101, 10 REA 105.
- 10 maternal sibs are averaging over \$10,000 making 2933 the fastest \$100,000 income producing cow in Split Diamond History in only 3 calf crops.
- A.I. Bred 4-11-17 to PA Fortitude 2500.
- Clean up Bull SD Active Duty 5056 4-15-17 - 6-1-17.
- Examined safe to clean up bull with heifer calf estimated due 3-1-18.



SD Active Duty 5056 -
\$20,000 Service Sire to Lot 34



Lot 35 - SD Forever Lady 6073



SD Forever Lady 6073

Birth Date: 01/17/16 Cow 18562348 Tattoo: 6073

SAV Ten Speed 3022
17633563

SD Forever Lady 4136
17905861

AAR Ten X 7008 SA # Mytty In Focus #
AAR Lady Kelton 5551 #
SAV Bismarck 5682 #
SAV Madame Pride 1134 # SAV Madame Pride 9100
V D A R Really Windy 4097 # AAR Really Windy 1205 #
VDAR Blackbird 2031
Baldrige Lineman L56
J P Ultra Focus #

CED	BW		WW		YW		CEM		MILK		
+2	.37	+3.2	.52	+61	.46	+98	.42	+6	.26	+10	.27
CW	MARB		RE		FAT		\$W	\$F	\$G	\$B	
+33	.39	+.49	.34	+.48	.35	+.004	.31	+39.13	+60.33	+34.68	+121.55

- Individual performance: WR 97, YR 98.
- Sire is the \$240,000 SAV Ten Speed featured at Genex with excellent growth and eye-appeal.
- Maternal sire "Really Windy" is known for great females and udder quality. Proven maternal pedigree in this young female bred to one of the hottest up and coming bulls in the country.
- A.I. Bred 4-11-17 to RB Confirmed 02-4524.
- Clean up Bull SD Active Duty 5056 4-15-17 - 6-1-17.
- Examined safe to A.I. Estimated due 1-10-18.



SAV Ten Speed 3022 -
Sire of Lots 34-35



RB Lady 7125-2933

Dam of Lot 34



RB Confirmed 02-4524

\$160,000 Service Sire to Lot 35

Split Diamond Ranch Bred Heifers



SD Queen 6295



Birth Date: 02/10/16 Cow 18584792 Tattoo: 6295

TC Vance 011
16734345

Connealy Right Answer 746 #

TC Pride 8056

S A V Final Answer 0035 #
Happy Dell of Conanga 262
Connealy Thunder #
TC Pride 4226

SD Queen 071
16907980

Sitz Emblazon 9598 #

SD Ext Bando 931

Sitz RLS Emblazon 961P
Sitz Eisa Evergreen 176 #
N Bar Emulation EXT #
SD Bandi 201

CED		BW		WW		YW		CEM		MILK					
+10	.36	+3	.51	+42	.45	+80	.41	+11	.32	+31	.34				
CW		MARB		RE		FAT		\$W		\$F		\$G		\$B	
+27	.41	+24	.37	+20	.37	+0.07	.33	+49.31	+28.24	+20.67	+78.16				

- Individual performance: 205 Wt. 666 lbs., WWR 91, 365 Wt. 837 lbs., YWR 100.
- Dam's production: 4 BWR 98, 4 NR 97, 4 YR 100, 2 REA 102.
- A full brother was a \$6,000 selection to Buhler Land and Cattle in the 2015 Split Diamond Bull Sale.
- 6295 is built for longevity, feed efficiency and the kind to keep replacements from.
- A.I. Bred 4-11-17 to Sitz Advantage 8693.
- Clean up Bull RB Indeed 02-4515 4-15-17 – 6-1-17.
- Examined safe to A.I. with bull estimated calf due 1-10-18



SD Blackcap 6339



Birth Date: 02/20/16 Cow 18562482 Tattoo: 6339

Sitz Advantage 869
17502631

Connealy Final Product #

Sitz JLS Annie 668

Connealy Product 568
Ebonista of Conanga 471 #
Mytty In Focus #
Sitz JLS Annie 136

TC Vance 011

SD Blackcap X792

Connealy Right Answer 746 #
TC Pride 8056
Sitz New Design 458N #
Bar S Blackcap 3153 #

CED		BW		WW		YW		CEM		MILK					
+10	.35	+6	.52	+58	.45	+100	.41	+13	.25	+36	.27				
CW		MARB		RE		FAT		\$W		\$F		\$G		\$B	
+45	.39	+61	.33	+46	.34	+0.058	.30	+73.20	+58.63	+29.21	+132.62				

- Individual performance: 205 Wt. 685 lbs., WWR 104, 365 Wt. 909 lbs., YWR 110.
- Dams Production 1 BWR 98, 1 NR 104, 1 YR 110.
- Very easy fleshing, long bodied Advantage daughter blending the maternal sires Vance and 458N.
- A.I. Bred 4-11-17 to SD Final Answer 5081.
- Clean up Bull RB Indeed 02-4515 4-15-17 – 6-1-17.
- Examined safe to A.I. with heifer calf estimated due 1-10-18.



Lot 38 - SD Queen Mother 6293



SD Queen Mother 6293



Birth Date: 02/10/16 Cow 18562457 Tattoo: 6293

HF Tiger 5T #
BT Border Patrol 1612
17350176 BT Bonnie 228

HF Kodiak 5R
HF Echo 84R
Connealy Impression #
B T Bonnie 265

TC Freedom 104 #

SD Queen Mother 156 #
15186558 V N A R Queen Mother 392A

Connealy Forefront #
T C Ruby 9095 #
S A F Fame #
V N A R Queen Mother 72G

CED	BW		WW		YW		CEM		MILK			
-2	.30	5.1	.50	+84	.45	+139	.41	+5	.24	+22	.27	
CW	MARB		RE		FAT		\$W		\$F		\$G	\$B
+56	.39	+24	.33	+37	.33	+0.12	.29	+69.43	+115.23	+16.33	+149.59	

- Individual performance: 205 Wt. 716 lbs., WWR 116, 365 Wt. 905 lbs., YWR 112.
- Pathfinder Dam's production: 10 BWR 98, 10 NR 108, 10 YR 100, 6 IMF 116, 6 REA 102.
- Two maternal brothers have averaged over \$7,500 in past Split Diamond Bull Sales.
- This powerful Border Patrol daughter ranks in the top 1% for WW, YW, \$F, 10% for DOC, CW, \$B.
- BT Border Patrol 1612 is a massive Tiger son with added length and growth genetics. He is very docile standing with extra base, width and excellent foot shape.
- A.I. Bred 4-11-17 to RB Confirmed 02-4524.
- Clean up Bull RB Indeed 02-4515 4-15-17 – 6-1-17.
- Examined safe to A.I. with heifer calf estimated due 1-10-18.



Sitz Advantage 869

Service Sire to Lot 36 & Sire of Lot 37



BT Border Patrol 1612

Sire of Lots 38-40

Split Diamond Ranch Bred Heifers



SD Primrose 6342

Birth Date: 02/20/16 Cow 18562458 Tattoo: 6342

BT Border Patrol 1612
17350176 BT Bonnie 228

Sitz Upward 307R #

SD Primrose 676D #

16664688 Berbos Primrose 4069 #

HF Kodiak 5R
HF Echo 84R
Connealy Impression #
B T Bonnie 265

Connealy Onward #
Sitz Henrietta Pride 81M
Hyline Right Time 338 #
Bebos Primrose 164 #

CED	BW	WW	YW	CEM	MILK						
+3	.32	+4.3	.52	+71	.46	+128	.42	+9	.27	+31	.29
CW	MARB	RE	FAT	SW	SF	SG	SB				
+64	.41	+5.6	.36	+47	.36	+0.05	.32	+66.12	+108.44	+30.76	+177.13

- Individual performance: 205 wt. 703 lbs. WWR 107, 365 Wt. 925 lbs. YWR 112
- Pathfinder Dams Production 1 BWR 98, 5 NR 107, 5 YR 102, 2 IMF 108
- Pathfinder Granddam Production 7 NR 106, 5 YR 105, 48 IMF 102 a very prolific donor with over 68 calves and progeny sales over \$140,000.
- 3 Maternal brothers have sold for an average of \$5,000 in past Split Diamond Bull Sales.
- 3 Generation of Pathfinder cows in this performance maternal pedigree.
- A.I. Bred 4-11-17 to SD Final Answer 5081.

Clean up Bull RB Indeed 02-4515 4-15-17 - 6-1-17.

Examined safe to A.I. with heifer calf estimated due 1-10-18.



SD Enchantress 6363

Birth Date: 02/26/16 Cow 18562468 Tattoo: 6363

BT Border Patrol 1612
17350176

HF Tiger 5T #

BT Bonnie 228

SD Enchantress 3071
17594421

SD Powder Horn X803

SD Enchantress 734 #

HF Kodiak 5R
HF Echo 84R
Connealy Impression #
B T Bonnie 265

Sitz New Design 458N #
Bar S Blackcap 3153 #
H A Image Maker 0415 #
SD Enchantress 089

CED	BW		WW		YW		CEM		MILK					
+0	.30	+5.4	.51	+75	.45	+119	.41	+8	.24	+28	.26			
CW	MARB		RE		FAT		SW		SF		SG		SB	
+47	.39	+1.5	.33	+20	.33	+0.28	.29	+70.10	+92.70	+08.75	+131.02			

- Individual performance: 205 Wt. 695 lbs., WWR 106, 365 Wt. 868 lbs., YWR 106.
- Dam's production :2 NR 103, 2 YR 105.
- Pathfinder Grandam's production: 4 BWR 93, 4 NR 110, 3 YR 104, 1 IMF 114.
- Another performance stand out by BT Border Patrol.
- A.I. Bred 4-11-17 to PA Fortitude 2500.

Clean up Bull SD Tour of Duty 5702 4-15-17 - 6-1-17

Examined safe to A.I. with heifer calf estimated due 1-10-18.

PA Fortitude 2500



GENEX

Service Sire to Lot 40



Lot 41 - SD Heiress 6265



SD Heiress 6265

Birth Date: 02/08/16 Cow 18597919 Tattoo: 6265

EXAR Denver 2002B
17160560

EXAR Upshot 0562B

Exar Royal Lass 1067

Rito 2 878 of 2536 BVND 878 #

BT Heiress 478P #

Sitz Upward 307R #
EXAR Barbara T020 #
EXAR 263C #
BR Royal Lass 19-132
Bon View New Design 878 #
G A R Precision 2536
Sitz Alliance 8199
BT Heiress 90L

Sandpoint Heiress 8136
16083187

CED	BW		WW		YW		CEM		MILK		
+7	.37	+3.0	.55	+66	.49	+111	.45	+9	.32	+23	.35
CW	MARB		RE		FAT		SW		SF	SG	SB
+37	.42	+5.6	.37	+4.5	.37	+0.01	.33	+60.45	+83.82	+36.50	+138.53

- Individual performance: 205 Wt. 652 lbs., WWR 99, 365 Wt. 839 lbs., YWR 102.
- Dams Production 6 NR 101, 5 YR 100, 2 IMF 105, 2 REA 103.
- Maternal Brother by TC Vance was a \$4,000 selection in the 2016 Split Diamond Bull sale to David Williams, Marfa Texas.
- Deep ribbed Denver daughter with extra capacity and length of body.
- A.I. Bred 4-11-17 to PA Fortitude 2500.

Clean up Bull SD Tour of Duty 5702 4-15-17 - 6-1-17.

Examined safe to clean up bull with heifer calf estimated due 2-15-18.



SD Lady 6289

Birth Date: 02/10/16 Cow 18562115 Tattoo: 6289

SD Powder Horn X803
16763961 Bar S Blackcap 3153 #

Danny Boy PH 616

SD Lady 645 #

16426461 SD Lady 458 #

Bon View New Design 1407 #
Sitz Ellunas Elite 3308
Connealy Front Page 0228 #
Bar S Blackcap 9057 #

Connealy Danny Boy #
Miss P H Sleep Easy 168
Mytty In Focus #
SD Maxi 220

CED	BW		WW		YW		CEM		MILK		
+0	.32	+4.0	.52	+57	.46	+98	.42	+3	.27	+36	.30
CW	MARB	RE	FAT	SW	SF	SG	SB				
+38	.38	+6.7	.32	+54	.33	+0.11	.29	+61.94	+46.14	+40.15	+120.53

- Individual performance: 205 Wt. 686 lbs., WWR 104, 365 Wt. 867 lbs., YWR 105.
- Pathfinder Dam's production: 6 NR 108, 5 YR 103, 2 REA 102.
- Pathfinder Grandam's production: 4 NR 107, 4 YR 102, 4 IMF 107, 4 REA 108, 4 RIB Fat 107, 4 Rump fat 82.
- Powder Horn is a great maternal, carcass sire and was the high selling bull in the 2011 Split Diamond bull sale to Beaver Creek Ranches Sheridan Wyoming.
- A.I. Bred 4-11-17 to RB Confirmed 02-4524.
- Clean up Bull RB Indeed 02-4515 4-15-17 - 6-1-17.
- Examined safe to A.I. with heifer calf estimated due 1-10-18.

Split Diamond Ranch Cow/Calf Pairs



Lot 43 - SD Emma 5069



SD Emma 5069

Birth Date: 01/19/15 Cow 18111602 Tattoo: 5069

SD Final Answer 3004
17594193

S A V Final Answer 0035 # Sitz Traveler 8180 #
S A V Emulous 8145
Sitz Emblazon 9598 #
SD Blanche 402 # SD Blanche 3007 274 ET #

SD Emma 3122
17595601

V D A R Really Windy 4097 # A A R Really Windy 1205 #
VDAR Blackbird 2031
Mytty In Focus #
SD Emma 875 SD Emma 651 #

CED	BW		WW		YW		CEM		MILK		
+5	.36	+2.1	.52	+60	.45	+96	.40	+9	.30	+22	.30
CW	MARB		RE		FAT		\$W	\$F	\$G	\$B	
+21	.39	+61	.33	+18	.34	+049	.30	+63.48	+62.10	+31.72	+97.18

- Individual performance: 205 Wt. 658 lbs., WWR 102, 365 Wt. 927 lbs., YWR 105.
- Sire was the \$10,250 lot 18 selection by Tyler Treager Bainville, MT. in the 2015 Split Diamond Bull sale. Exhibits great phenotype with excellent maternal qualities and easy fleshing ability.
- A.I. Bred 4-13-17 SD Active Duty 5056.
- Clean up Bull Sitz Advantage 8693 4-18-17 – 6-1-17.
- Examined safe to A.I. Estimated due 1-18-2018.



SD Emma 7130

Birth Date: 01/19/17 Cow 18771781 Tattoo: 7130

Sitz Advantage 869
17502631

Connealy Final Product # Connealy Product 568
Ebonista of Conanga 471 #
Mytty In Focus #
Sitz JLS Annie 668 Sitz JLS Annie 136

SD Emma 5069
18111602

SD Final Answer 3004 S A V Final Answer 0035 #
SD Emma 3122 SD Blanche 402 #
V D A R Really Windy 4097 #
SD Emma 875

CED	BW		WW		YW		CEM		MILK		
+4	.35	+2.6	.52	+64	.45	+103	.37	+8	.25	+21	.26
CW	MARB		RE		FAT		\$W	\$F	\$G	\$B	
+33	.38	+28	.33	+44	.34	+047	.30	+66.93	+63.26	+19.80	+103.92

- Individual performance: BW 72 lbs., 205 Wt., 681 lbs., WWR 99.
- Solid made heifer by Sitz Advantage.
- Sitz Advantage 869 is the \$48,000 second high selling bull in the 2014 Sitz Fall Sale. His progeny show great docility and were very popular in the 2017 Split Diamond Ranch Bull Sale including the \$16,000 top selling bull to ABS Global.
- This Advantage daughter is long bodied, feminine and very correct.

Reference Sire



SD Tour of Duty 5702 W

Ref
Sire

SD Tour of Duty 5702 W

Birth Date: 12/23/15 Bull 18599266 Tattoo: 5702

R B Tour Of Duty 177
+16984170

Werner War Party 2417 #

B A Lady 6807 305

EXAR Denver 2002B

SD Lady 4042 W
+17812604

R B Lady 7125-2933

Connealy Onward #
BAAR USA Lady Jaye 489
Vermilion Dateline 7078 #
G D Lady Hi Flyer 302
XAR Upshot 0562B
Exar Royal Lass 1067
G A R Objective 7125 #
R B Lady Standard 308-933

CED	BW		WW		YW		CEM		MILK		
+14	.38	-.6	.54	+72	.47	+126	.43	+10	.30	+40	.31
CW	MARB		RE	FAT		\$W	\$F	\$G	\$B		
+46	.42	+59	.38	+80	.38	-.031	.35	+88.62	+92.13	+43.21	+150.84

- \$15,000 top selling Lot 1 bull selected by Southard Land & Cattle, WY in the 2017 Split Diamond Bull Sale.
- Individual performance: BW 70 lbs., 205 Wt., 789 lbs., WWR 117, 365 Wt., 1307 lbs., YW
- Dam's production: 1 NR 117, 1 YR 110.
- Grandam's production: 3 NR 113, 2 YR 119.
- Service sire to Lot 41.

Split Diamond Genetic Advantage



Lot 43A - SD Emma 7130



Split Diamond Ranch Cow/Calf Pairs



Lot 44 - SD Primrose 5141



SD Primrose 5141



Birth Date: 01/27/15 Cow +18261863 Tattoo: 5141

Sitz Upward 307R
14963730

Connealy Onward #
Sitz Henrietta Pride 81M
H A Image Maker 0415 #
Berkos Primrose 5044 #
Connealy Lead On #
Altune of Conanga 6104
Sitz Value 7097 #
Sitz Henrietta Pride 1370
Hero 6267 of R R 2418 #
H A Rito Blackcap 9038
B C C Bushwacker 41-93 #
Mackford Primrose 9138

SD Primrose 7012 #
15855040

CED	BW		WW		YW		CEM		MILK		
+4	.35	+1.7	.53	+69	.47	+110	.43	+4	.35	+31	.35
CW	MARB		RE		FAT		\$W	\$F	\$G	\$B	
+56	.42	+1.3	.37	+46	.37	-.001	.34	+78.38	+61.10	+13.53	+128.38

- Individual performance: 205 Wt. 681 lbs., WWR 105, 365 Wt. 983 lbs., YWR 113.
- Pathfinder Dam's production: 4 NR 113, 4 YR 107, 6 IMF 101, 6 REA 108.
- Pathfinder Grandam's production: 4 BWR 92, 9 NR 03, 5 YR 104, 5 IMF 101, 5 REA 111.
- Full brother was an \$8,000 selection in the 2013 Split Diamond Bull Sale.
- A.I. Bred 4-13-17 SD Active Duty 5056.
- Clean up Bull RB Ledgestone 185-443 4-20-17 - 5-13-17.
- Examined safe to A.I. Estimated due 1-18-2018.



SD Primrose 7000



Birth Date: 01/03/17 Cow 18771693 Tattoo: 7000

SD Active Duty 5056
18230443

R B Active Duty 010
SD Queen Lady 319 A
Sitz Upward 307R #
SD Primrose 7012 #
LCC New Standard #
B A Lady 6807 305
Connealy Impression #
SCR Queen Lady 80862
Connealy Onward #
Sitz Henrietta Pride 81M
H A Image Maker 0415 #
Berkos Primrose 5044 #

CED	BW		WW		YW		CEM		MILK		
+10	.33	-.8	.51	+52	.44	+86	.36	+5	.25	+24	.27
CW	MARB		RE	FAT		\$W	\$F	\$G		\$B	
+24	.38	+2.1	.33	+39	.33	+0.06	.30	+55.58	+25.38	+22.26	+67.42

- Individual performance: BW 65 lbs., BR 93, 205 Wt., 706 lbs., WWR 102.
- SD Active Duty 5056 is the \$20,000 high selling and Lot 1 bull in the 2016 Split Diamond Bull Sale.
- Active Duty 5056 is a low PAP Active Duty son with superior volume and capacity to work in real world conditions. His \$7000 flush sister sold in the 2016 National Western Foundation Female Sale to Rooney's Round Mountain Ranch, WI.

Reference Sire



RB Ledgestone 185-443

Ref
Sire

RB Ledgestone 185-443



Birth Date: 02/07/14 Bull 17993492 Tattoo: 443

Tombstone 050
+16644975

Sitz Upward 307R #
Mytty Countess 906

R B Lady Credence 185-890
+16998951

SQ Credence 67S #
R B Lady Standard 305-890

Connealy Onward #
Sitz Henrietta Pride 81M
Sitz Alliance 6595 #
Baldrige Countess 357
S S Objective T510 0T26 #
Rita 3540 of 021 Rito 111
LCC New Standard #
B A Lady 6807 305

CED	BW		WW		YW		CEM		MILK		
+11	.45	-.4	.65	+75	.59	+120	.52	+13	.33	+31	.34
CW	MARB		RE		FAT		\$W		\$F		\$B
+38	.46	+1.3	.40	+43	.40	-.032	.38	+87.42	+80.36	+19.86	+112.26

- This stout Tombstone son was the high selling bull in the 2015 Minnesota Bull Test Sale.
- His Pathfinder dam is a featured donor in the Split Diamond ET program.
- Ledgestone is bred for performance and does not sacrifice important traits like scrotal, muscle and eye appeal.
- Sire of Lot 45A.

Superior Performance Genetics



Lot 44A - SD Primrose 7000

Split Diamond Ranch & Sioux Pass Foundation Females



SD Karen 4076

Birth Date: 01/21/14 Cow 17811447 Tattoo: 4076

TC Vance 011
16734345

Connealy Right Answer 746 #

TC Pride 8056

SAV Final Answer 0035 #
Happy Dell of Conanga 262
Connealy Thunder #
TC Pride 4226

Sitz Emblazon 9598 #

SD Karen 604 #

Sitz RLS Emblazon 961P
Sitz Elsa Evergreen 176 #
Mytty In Focus #
SD Karen 223

SD Karen 2335
17233528

CED	BW		WW		YW		CEM		MILK		
+3	.37	+2.7	.53	+59	.47	+115	.43	+10	.34	+34	.36
CW	MARB		RE	FAT		\$W	\$F	\$G	\$B		
+46	.39	+2.2	.34	+28	.35	-.015	.31	+58.82	+78.38	+19.34	+122.22

• Production: 1 WR 103, 1 YR 107, 1 IMF 105.

• Beautifully made Vance daughter with exceptional thickness and length of body blending the maternal sires of In Focus and Emblazon.

• Son by Sitz Advantage 8693 was a \$5,000 selection in the 2017 Split Diamond Bull Sale.

• A.I. Bred 4-13-17 SD Final Answer 5081.
Clean up Bull Sitz Advantage 8693
4-18-17 – 6-1-17. Examined safe to A.I.
Estimated due 1-18-2018.



SD Advantage 6041 -
\$5000 son of Lot 45



SD Karen 7115

Birth Date: 01/18/17 Cow 18771776 Tattoo: 7115

RB Ledgestone 185-443
17993492

Tombstone 050 #

R B Lady Credence 185-890 #

Sitz Upward 307R #
Mytty Countess 906
SQ Credence 67S #
R B Lady Standard 305-890

TC Vance 011

SD Karen 2335

Connealy Right Answer 746 #
TC Pride 8056
Sitz Emblazon 9598 #
SD Karen 604 #

SD Karen 4076
17811447

CED		BW		WW		YW		CEM		MILK	
+15	.31	-.2	.50	+68	.44	+115	.35	+14	.24	+34	.25
CW	MARB	RE	FAT	\$W	\$F	\$G	\$B				
+37	.36	+.21	.31	+.26	.32	+.007	.28	+81.37	+80.50	+19.53	+113.38

• Individual performance: BW 72 lbs., BR 95, 205 Wt. 737 lbs., WWR 107.

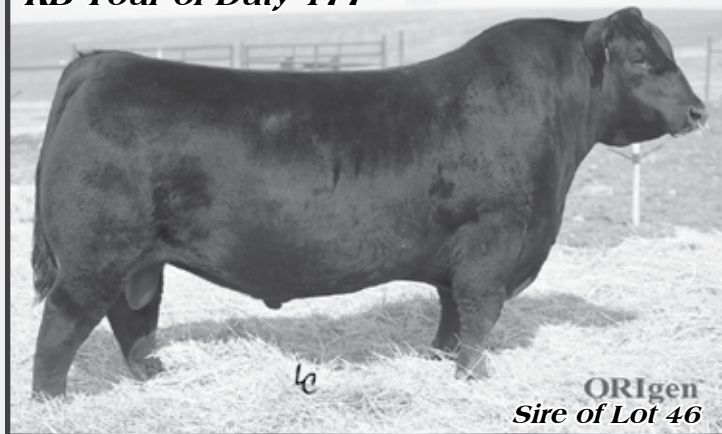
• A very attractive, stylish daughter of the high selling bull in the 2015 Minnesota Bull Test Sale.

• Blends real world performance data with a stunning phenotype that will show successfully.



Lot 45A - SD Karen 7115

RB Tour of Duty 177



ORigen
Sire of Lot 46



SPA 617D of 6678 x TOD

Birth Date: 01/12/16 Cow +18468420 Tattoo: 617D

Werner War Party 2417 #
R B Tour Of Duty 177
16984170 B A Lady 6807 305

Connealy Onward #
BAAR USA Lady Jaye 489
Vermilion Dateline 7078 #
G D Lady Hi Flyer 302

Stevenson CE Deluxe 1914 #
Diamond Erica Lass 6678
16172592 Diamond Erica Lass 3126

C A Future Direction 5321 #
FSHK Pride 180 #
Basin Payweight 9333 #
R&S Erica Lass 8803 #

CED	BW	WW	YW	CEM	MILK						
+17	.05	+1.9	.05	+62	.05	+113	.05	+11	.05	+32	.05
CW	MARB	RE	FAT	\$W	\$F	\$G	\$B				
+51	.05	+1.62	.05	+1.68	.05	-.016	.05	+69.79	+70.07	+40.64	+148.23

• Individual performance: BW 72 lbs., 205 Wt. 581 lbs., 365 Wt. 691 lbs. (ET).

• Dam's production: 2 NR 102, 2 YR 101. She posts 4 IMF 102.

• Donor dam was an \$8500 selection in the 2009 National Western Foundation Female Sale from Stevenson's Diamond Dot, Hobson, MT.

• A maternal brother, SPA Kingrichard 326 was retained by Sioux Pass from the 2015 Mildand Bull Test and was used successfully in the program.

• The maternal grandsire, CE Deluxe is a Pathfinder high marbling (+1.15) cowmaker and a maternal brother to the popular ORigen sire, Stevenson Rockmount RX 933.

• Her sire, Tour of Duty is the ORigen popular semen sales leader that transmits great length, power and performance.

• Al bred on 4-10-17 to SS Trump B263.

Later pasture exposed to Trump from 4-13-17 to May 5, 2017.

Examined safe to Trump and estimated due 1-17-18.

SS Trump B263



\$30,000 Service Sire to Lot 46 ORigen

Circle L Heifer Calves



Lot 47 - Circle L Lady 100E



Circle L Lady 100E

Birth Date: 01/04/17 Cow +18848509 Tattoo: 100E

Basin Payweight 1682
17038724

Basin Payweight 006S # Vermilion Payweight J847 #
21AR O Lass 7017 Basin Lucy 3829
HARB Pendleton 765 J H #
21AR O Lass F24A
Nichols Extra K205 # Nichols Extra H6 #
Nichols Black Heiress F346
Sinclair Lady 5ET1 4465 N Bar Explosion TNT #
Ideal 4465 of 6807 4286

Circle L Lady 920w
16505431

CED	BW		WW		YW		CEM		MILK		
+9	.35	-1	.49	+61	.44	+102	.39	+12	.31	+32	.32
CW	MARB		RE	FAT		\$W	\$F	\$G	\$B		
+48	.41	+.78	.38	+.73	.38	+.026	.35	+77.55	+57.18	+42.05	+147.83

zoetis Percent Rank GGPLD

CED	BW	WW	YW	DMI	YH	SC	DOC	HP	CEM	MK	MW	MH	CW	MARB	RE	FAT	TEND
39	12	17	42	86	80	71	15	40	3	51	70	43	17	37	20	71	72

- BW: 68 lbs.
- Dam's production: 3 BR 95, 3 NR 118, 1 YR 117. She posts 17 IMF 102, RE 103, Rib Fat 95, Rump Fat 95.
- The powerful and productive donor dam is a daughter of the \$48,000 Lot 1 high selling cow, Sinclair Lady 5ET1 4465 featured at Sitz Angus, JR Ranch and Byrd Cattle Co. programs.
- Sure fire calving ease genetics are locked in here with the dam posting BW -.2 and the grandam BW -1.9 EPDs.
- Full sib embryos sold in the 2016 Stars of Montana Sale to Norm Johnson, OR.
- Basin Payweight 1682 is the ORigen/ABS calving ease sire with exceptional body mass and capacity. His sons and daughters have been in high demand the past 2 years.



Dam of Lot 47



Lot 48 - Circle L Erianna 138E



Circle L Erianna 138E

Birth Date: 01/16/17 Cow 18832692 Tattoo: 138E

Circle L Gus
17993084

S Chisum 6175 # S Alliance 3313
S Gloria 464 #
HARB Pendleton 765 J H #
Circle L Pride 38T
Mytty In Focus #
AAR Lady Kelton 5551 #
TC Total 410 #
Quaker Hill Erianna 2J3 #

AAR Ten X 7008 SA #
Welytok Top TenX Erianna 5C2
18099114 Quaker Hill Erianna 8T2

CED	BW		WW		YW		CEM		MILK		
+4	.32	+2.4	.49	+75	.42	+125	.37	+13	.27	+27	.29
CW	MARB		RE	FAT		\$W	\$F	\$G	\$B		
+66	.39	+.49	.36	+.68	.35	+.012	.32	+72.37	+97.11	+29.93	+174.68

zoetis Percent Rank GGPLD

CED	BW	WW	YW	DMI	YH	SC	DOC	HP	CEM	MK	MW	MH	CW	MARB	RE	FAT	TEND
63	67	4	25	70	35	33	90	88	3	18	23	37	3	73	40	75	58

- BW: 74 lbs.
- Dam was selected as a heifer calf as the \$4000 Lot 63A feature in the 2016 National Western Foundation Female Sale from Welytok Angus, NY.
- Grandam's production: 3 BR 97, 3 NR 108, 3 YR 106. She sold for a \$30,000 valuation at Denver along with her daughter and produced the \$13,000 Welytok Prime Premier 2A20 featured at Select Sires.
- A flush sister to the dam produced a \$10,000 Black Granite son in the 2017 National Western Angus Bull Sale. That flush sister sold for \$87,500 to High Roller Angus, TX.
- Her sire, Circle L Gus was selected as the \$10,500 2nd high selling bull. He posted the largest RE in the sale at 16.0 and is one of the cleanest fronted, most attractive Chisum sons anywhere along with a 38 PAP score for high elevations.



Sire of Lot 48



OCC Montana Dream 636

Birth Date: 02/24/16 Cow +18533428 Tattoo: 636

Musgrave Big Sky
17614813

Connealy Earnan 076E
SAV Primrose 7861
Connealy Consensus #
Brazila of Conanga 3991 839A
S A F 598 Bando 5175 #
S A V Primrose 8244 #

OCC Montana Dream 809
16115924

Sitz Upward 307R #
OCC Montana Dream 526
Connealy Onward #
Sitz Henrietta Pride 81M
W C C Special Design L309 #
S A Montana Dream

CED	BW	WW	YW	CEM	MILK
+9	.35	+1.6	.51	+63	.45
+107	.41	+6	.29	+27	.30
CW	MARB	RE	FAT	\$W	\$F
+46	.40	+3.4	.36	+61	.36
+028	.33	+65.49	+65.59	+24.72	+129.33

zoetis Percent Rank

CED	BW	WW	YW	DMI	YH	SC	DOC	HP	CEM	MK	MW	MH	CW	MARB	RE	FAT	TEND
33	43	11	27	73	26	9	15	29	63	32	45	31	10	78	27	79	92

- Dam's production: 5 BR 96, 5 NR 106, 1 YR 103. She posts 4 IMF 105, RE 101, Rib Fat 99, Rump Fat 98.
- Grandam's production: 4 NR 103, 3 YR 102.
- Two maternal brothers by RB Active Duty 010 sold in the 2016 Midland Test Sale for \$8500 and \$5000.
- A flush brother sold in the 2017 Midland Bull Test Sale for \$7000.
- Musgrave Big Sky is a real powerhouse that is loaded with muscle, masculinity, marbling and character selling for \$145,000 to top the 2014 Musgrave Angus Sale to Bobcat Angus.
- The AI service sire DL Dually 86 is the \$52,500 Sonic son selected by ABS Global in the 2017 Lewis Bros. Sale in South Dakota He posts BW +1.4, WW +96, Milk +17, YW +164.
- AI bred on 6-4-17 to DL Dually 86.

Examined safe to Dually and estimated due 3-13-18.



OCC Montana Dream 645

Birth Date: 03/10/16 Cow 18858104 Tattoo: 645

Basin Payweight 1682
17038724

Basin Payweight 006S #
21AR O Lass 7017
Vermilion Payweight J847 #
Basin Lucy 3829
HARB Pendleton 765 J H #
21AR O Lass F24A

OCC Montana Dream 411
18855506

Sitz Upward 307R #
OCC Montana Dream 946
Connealy Onward #
Sitz Henrietta Pride 81M
N Bar Emulation EXT #
S A Montana Dream

(S) EPDS	CED	BW	WW	YW	CEM	MILK
	+4	+7	+70	+121	+8	+21

(D) EPDS	CED	BW	WW	YW	CEM	MILK
	+5	+2.6	+51	+94	+10	+31

- Out of a 2-year-old Upward dam from the Montana Dream production oriented cow family developed by Olson Cattle Co.
- Grandam's production: 2 NR 101.
- Foundation 3rd dam is sired by SA Nugget 9507 developed by Tony Stein, Wendy Olson's father.
- The daughters of Basin Payweight 1682 in production are deep bodied, easy fleshing young cows with nice udders and a real brood cow look. 1682 is probably the top capacity bull in the breed with tremendous spring of rib and internal dimension.
- AI bred on 5-16-17 to DL Dually 86.

Examined safe to Dually and estimated due 2-22-18.

DL Dually 86



Service Sire to Lot 49-50



OCC Lucy 678

Birth Date: 03/27/16 Cow 18854567 Tattoo: 678

Koupals B&B Identity #
16710463

Sitz Upward 307R #
B&B Erica 605 #
Connealy Onward #
Sitz Henrietta Pride 81M
G A R Exaltation 3144 #
B&B Erica 4064
Kahn Broadband R A 94L #
Inniway Ms VRD 232
Bon View Bando 598 #
Shadybrook Ever Entense 491G
Vermilion Dateline 7078 #
Wards Lucy 414

OCC Lucy 637
15570139

CED	BW	WW	YW	CEM	MILK
+6	.05	+2.1	.05	+51	.05
+93	.05	+6	.05	+32	.05
CW	MARB	RE	FAT	\$W	\$F
+40	.05	+1.40	.05	+1.45	.05
+011	.05	+57.44	+46.19	+28.37	+116.54

- Dam's production: 8 NR 101, 5 YR 100
- Grandam's production: 6 NR 106, 4 YR 107. She posts 50 IMF 101, RE 101.
- The grandam was the most influential foundation female in the Olson program the past decade and was a many time champion for Kyla and Kane Olson. She also was the grandam of the \$20,000 leadoff and high selling bred heifer in the 2013 NILE to EZ Angus, CA.
- A paternal sister to the popular ORlgen sire, Musgrave Aviator.
- AI bred on 5-16-17 to DL Sonic 444.

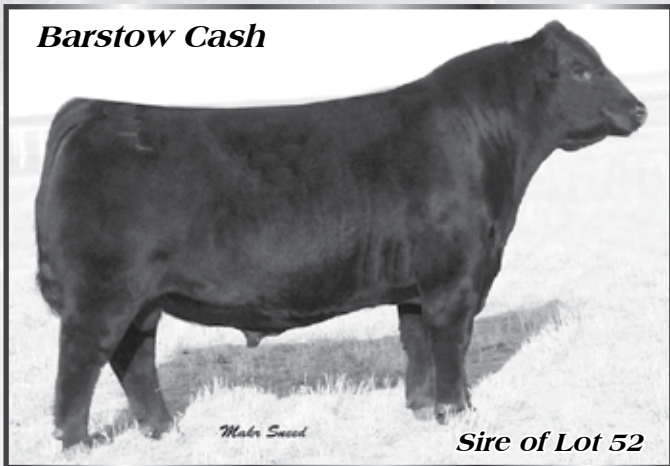
Examined safe to Sonic and estimated due 2-22-18 carrying a heifer calf.

DL Sonic 444



Service Sire to Lot 51

Barstow Cash



OCC Montana Dream 630

Birth Date: 03/02/16 Cow 18854566 Tattoo: 630

Barstow Cash
17145326

Sitz Dash 10277 #
Barstow Queen W16
Mytty In Focus #
OCC Montana Dream 404
Sitz Upward 307R #
Sitz Everelda Entense 2665
S A V Final Answer 0035 #
RCA Queen R42
S A F Focus of E R #
Mytty Countess 906
Big Elban of Graham 38425
S A Montana Dream 9814

CED		BW		WW		YW		CEM		MILK	
I+8	.05	I+1.4	.05	I+59	.05	I+107	.05	I+11	.05	I+23	.05
CW		MARB		RE		FAT	\$W	\$F		\$G	\$B
I+37	.05	I+43	.05	I+54	.05	I+-.010	.05	+59.26	+66.97	+33.74	+120.80

- Dam's production: 8 NR 103, 5 YR 102. She posts 3 RE 101.
- Grandam's production: 8 NR 104, 7 YR 105. She posts 5 IMF 114, RE 101.
- The grandam is sired by Big Elban of Graham 38425, the outcross growth bull that has a rich history in Olson past NILE high selling lots. He added power, volume and thickness to his progeny and was used successfully in the SydGen program in Missouri.
- Barstow Cash is the \$108,000 1/3 interest Krebs Ranch popular sire that is medium framed, easy fleshing with tremendous body mass and muscle shape. His \$40,000 dam was a highlight of the 2017 National Western Foundation Female Sale.
- AI bred on 5-16-17 to OCC Heavyweight 659.
Examined safe to Heavyweight 659 estimated due 2-22-18 carrying a heifer calf.
Service sire is the \$20,000 Basin Payweight 1682 son selling to Eagle Pass in 2017 Midland Bull Test Sale.

Ref Sire OCC Heavyweight 659

Birth Date: 3/15/16 Bull 18700853 Tattoo: 659

Basin Payweight 006S #
Basin Payweight 1682
17038724
21AR O Lass 7017
H A R B Windy 702 JH #
OCC Montana Dream 044
OCC Montana Dream 313
Vermilion Payweight J847 #
Basin Lucy 3829
HARB Pendleton 765 J H #
21AR O Lass F24A
A A R Really Windy 1205 #
H A R B Black Lady 073 J H #
Big Elban of Graham 38425
S A Montana Dream

CED	BW		WW		YW		CEM		MILK			
+3	.35	+1.5	.52	+66	.46	+119	.42	+8	.29	+34	.31	
CW	MARB		RE		FAT		\$W		\$F		\$G	\$B
+47	.40	+31	.37	+59	.37	+001	.34	+73.12	+82.74	+26.02	+132.91	

- Popular \$20,000 selection of Eagle Pass Ranch, Highmore, SD in the 2017 Midland Bull Test Sale.
- Individual performance: BW 71 lbs., 205 Wt., 836 lbs., WWR 108, 365 Wt. 1298 lbs., YWR 109, MBT Index 112, RFI -6.00, Efficiency Ratio 128.
- Dam's production: 3 NR 103.
- Service sire to Lots 52-54.



OCC Lucy 660

Birth Date: 03/16/16 Cow 18858106 Tattoo: 660

SF Speedway A187
17470682
G A R Objective 7125 #
SF Tiara X151
Connealy Consensus 7229 #
OCC Lucy 832
S S Objective T510 OT26 #
G A R 1407 New Design 1463
Gardens Next Wave HE17
Rimrock Tiara 405
Connealy Consensus #
Blue Lilly of Conanga 16
Mytty In Focus #
Inniway Ms VRD 232

CED	BW	WW	YW	CEM	MILK						
I+8	.05	I+1.9	.05	I+68	.05	I+113	.05	I+10	.05	I+27	.05
CW	MARB	RE	FAT	\$W	\$F	\$G	\$B				
				+63.65	+74.30						

- Out of a 2-year-old Consensus 7229 dam from the production oriented OCC Lucy cow family.
- Grandam's production: 6 NR 107, 5 YR 104. She posts 2 IMF 118.
- A maternal brother to the dam by Musgrave Big Sky sold in the 2017 Midland Test Sale to Fred & Carrie Hopkin, Powell, WY.
- Great-grandam's production: 6 NR 106, 4 YR 107. She posts 50 IMF 101, RE 101.
- SF Speedway A187 has always been a superior length of body outlier at ORigen with an outcross pedigree and has a top 1% \$W and \$B combination.
- Carries the valuable service of the \$20,000 1682 son that sold in the 2017 Midland Bull Test Sale that had one of the top RFI scores at -6.00 in the entire test ratioing 128 for this valuable feed efficiency trait.
- AI bred on 5-16-17 to OCC Heavyweight 659.
Examined safe to Heavyweight 659
and estimated due 2-22-18 carrying a bull calf.



OCC Lucy 649

Birth Date: 03/11/16 Cow 18858105 Tattoo: 649

SF Speedway A187
17470682
G A R Objective 7125 #
SF Tiara X151
OCC Ultimate Answer 118
OCC Lucy 616
S S Objective T510 OT26 #
G A R 1407 New Design 1463
Gardens Next Wave HE17
Rimrock Tiara 405
S A V Final Answer 0035 #
OCC Montana Dream 809
Mytty In Focus #
Inniway Ms VRD 232

(S) EPDS	CED	BW	WW	YW	CEM	MILK
	+11	+.8	+81	+134	+11	+26
(D) EPDS	CED	BW	WW	YW	CEM	MILK
	I+10	I+.8	I+57	I+102	I+12	I+30

- Out of a 2-year-old Mytty In Focus dam from the OCC Lucy cow family noted for great performance.
- Grandam's production: 4 BR 98, 4 NR 101, 2 YR 102.
- Great-grandam's production: 6 NR 106, 4 YR 107. She posts 50 IMF 101, RE 101.
- SF Speedway A187 is one of the new rising stars at ORigen with strength and balance covering all the bases including feed efficiency, scrotal, docility, small to moderate birth weights, explosive growth and production profitability.
- Service sire is the \$20,000 Basin Payweight 1682 that Olson Cattle Co. sold in the 2017 Midland Test Sale to Eagle Pass Ranch in South Dakota.
- AI bred on 5-16-17 to OCC Heavyweight 659.
Examined safe to Heavyweight 659
and estimated due 2-22-18 carrying a heifer calf.

Dam of Reference Donor



T C A Protege Treasure 003



M A R Treasure 1601

Birth Date: 10/13/16 Cow +18712169 Tattoo: 0

FF Rito 2Q26 of 356H 9Q13 17518366
J/R Queen of New Design 356H
Gardens Highmark #
Rita 5F56 of 1198 FD
Summitcrest Complete 1P55 #
Goode Predestined 620

T C A Protege Treasure 003 16675386
GAR-EGL Protégé #
Rito 112 of 2536 Rito 616 #
L B 6807 Isabel 339
S A V 5175 Bando 0699 #
T C A Treasure 0699 601 #
Sweetwater Treasure 73M

CED	BW		WW		YW		CEM		MILK		
+3	.32	+3.3	.49	+69	.42	+133	.36	+12	.27	+28	.29
CW	MARB	RE	FAT	\$W	\$F	\$G	\$B				
+80	.39	+69	.35	+1.56	.35	-.014	.31	+60.41	+109.12	+47.92	+202.51

- Selling a flush to the bull of the buyers choice. Buyer is guaranteed at least 2 pregnancies.
- Dam's production: 3 BR 96, 3 NR 118, 2 YR 113.
- Donor was produced at Malek Angus through a \$10,000 high pregnancy purchase from Evans Farms, TX and represents an opportunity to explore some new and upcoming carcass and performance genetics with over +200 \$B.
- The dam, TCA Protege Treasure 003 is a maternal sister to the Select Sires feature, TCA Accruel 260. A flush on Treasure 003 sold for \$18,000 in the 2016 Evans Farms Sale to Lazy F Cattle Co. and a pregnancy from her sold for \$11,500 to Hillhouse Angus, TX.
- Grandam's production: 6 BR 92, 6 NR 106, 4 YR 104.
- Take advantage of the strong carcass and feed efficiency genetics that offer an exciting future in the Angus breed. Scrotal EPD: +1.53.

Carter Final Option 201



Sire of Lot 57

RB Black Ranger 458



Sire of Lot 56

S Whitlock



Service Sire of Lot 56 GENEX



Rich Blackbird 4756

Birth Date: 01/21/16 Cow 18590030 Tattoo: 4756

RB Black Ranger 458
17877012

Connealy Confidence 0100
R B Lady Standard 305-890

Connealy Tobin
Becka Gala of Conanga 8281
LCC New Standard #
B A Lady 6807 305

Rich Blackbird 4424
18240389

Diamond Republic 2432
R&S Blackbird 2184 #

Diamond Justice 901S #
Diamond Black Lady 7206 #
J D Daigger 901 #
R&S Blackbird M461

CED	BW		WW		YW		CEM		MILK		
+11	.35	+4	.52	+54	.45	+99	.37	+11	.25	+29	.27
CW	MARB		RE		FAT		\$W	\$F	\$G	\$B	
+47	.38	+37	.33	+70	.33	+0.11	.29	+54.14	+60.06	+28.98	+136.52

- Individual performance: BW 73 lbs., BR 93, 205 Wt. 620 lbs., WWR 100 with 44 contemporaries.
 - Dam's production: 1 BR 93, 1 NR 100.
 - Grandam's production: 11 NR 107, 7 YR 106 – Pathfinder.
 - The maternal grandsire, Diamond Republic 2432 is a full brother to Diamond In The Rough featured at Genex.
 - A maternal sister by Diamond Payweight C118 is retained in the Rich Angus program.
 - Her sire, RB Black Ranger 458 is the reliable calving ease and high maternal Confidence son featured at ORigen. He is a son of the \$170,000 RB Lady Standard 305-890 featured at Herbst Angus and out of one of the greatest flushes ever including the \$295,000 Gaffney Game Changer and the \$100,000 Gaffney Game Time.
 - The service sire, S Whitlock 179 is the popular Chisum son featured at Genex with great performance, a respected maternal pedigree and a solid body type.
 - AI bred on 4-24-17 to S Whitlock 179.
- Examined safe to Whitlock estimated due 1-31-18 carrying a heifer calf.



Rich Lassie 3997

Birth Date: 02/03/17 Cow 18864623 Tattoo: 3997

Carter Final Option 201
17645287

Connealy Final Product #
Carter Lacey 2189 #

Connealy Product 568
Ebonista of Conanga 471 #
Sitz Upward 307R #
Carter Lacey 661

R&S Lassie JMS 9993 #
14458987

Bon View New Design 1407 #
R&S Lassie JMS 7029

B/R New Design 036 #
Bon View Pride 664
Basin Rainmaker 654X #
Stevenson Lassie 831G

CED	BW		WW		YW		CEM		MILK		
+1	.31	+4.2	.48	+68	.43	+121	.38	+11	.26	+25	.29
CW	MARB	RE	FAT	\$W	\$F	\$G	\$B				
+43	.38	+51	.34	+18	.34	+0.16	.30	+55.38	+77.43	+27.75	+120.66

- Dam's production: 12 NR 106, 6 YR 100 – Pathfinder. She posts 4 RE 104.
- Grandam's production: 8 NR 104, 7 YR 104. She posts 7 RE 100. This is Jordan Stevenson's foundation female that has a special significance because at her birth was gifted by Stevenson family matriarch Jeanette Stevenson and is sired by the rare and valuable maternal legend, Stevenson Rainmaker 654X.
- Carter Final Option 201 is a long made, high performance sire that is co-owned by Stevenson's Diamond Dot, Hilltop Angus, Denton, MT and Carter Cattle Co., Pingree, ID.
- A real power female backed by a high producing cow family at Rich Angus.



This sale will be broadcast live over the internet via Frontier Live Sale. You will be able to see and hear the sale live, and keep up with the bidding via a scrolling bid screen. For buyers that are unable to attend the sale, you will have the option of bidding online or you can place a bid using the telephone bidlines. If you wish to bid on a lot via the telephone bidlines, you are encouraged to call a couple of lots in advance.

In order to place bids on the Internet or over the phone on sale day, you must pre-register and obtain a bidder number and a password.

All buyers must register – registrations do not carry over from sale to sale or year to year. To register, go to www.frontierlivesale.com and click on the link for this particular sale.

A sale order will be posted in advance of the sale and there is an online catalog available at www.frontierlivesale.com

For those who wish to simply view the sale without registering, please use the following log in credentials. : Username: watchsale – Password: 123456

Instructions for watching the sale can be found at www.frontierlivesale.com

We encourage you to register early to avoid any problems and make sure you are set up to view the sale. Visit Frontier Live Sale for all the details





PO Box 329
Circle, MT 59215

“THE KEEPING KIND”

We dug deep into our herds for this event!



BASIN JOY 2015
She sells - Lot 6



BASIN LADY S532 AK
Dam of Basin Excitement sells - Lot 19



BASIN JOY 2019
She sells - Lot 7



SD HEIRESS 6265
She sells - Lot 41



CIRCLE L LADY 100E
She sells - Lot 9



SD PRIMROSE 7000
She sells - Lot 44A



ICC BARBARA K 905-7410
She sells - Lot 15



GMAR COMRADE D761
She sells - Lot 9



SALE BROADCAST LIVE
www.frontierlivesale.com

